

## Anti-Peroxiredoxin 4 Rabbit Monoclonal Antibody Catalog # ABO15333

### Specification

---

#### Anti-Peroxiredoxin 4 Rabbit Monoclonal Antibody - Product Information

Application	WB, IHC
Primary Accession	<a href="#">O13162</a>
Host	Rabbit
Isotype	IgG
Reactivity	Rat, Human, Mouse
Clonality	Monoclonal
Format	Liquid

#### Description

Anti-Peroxiredoxin 4 Rabbit Monoclonal Antibody . Tested in WB, IHC applications. This antibody reacts with Human, Mouse, Rat.

#### Anti-Peroxiredoxin 4 Rabbit Monoclonal Antibody - Additional Information

Gene ID 10549

#### Other Names

Peroxiredoxin-4, 1.11.1.24, Antioxidant enzyme AOE372, AOE37-2, Peroxiredoxin IV, Prx-IV, Thioredoxin peroxidase AO372, Thioredoxin-dependent peroxide reductase A0372, Thioredoxin-dependent peroxiredoxin 4, PRDX4

#### Application Details

WB 1:1000-1:5000<br>IHC 1:50-1:200

#### Contents

Rabbit IgG in phosphate buffered saline, pH 7.4, 150mM NaCl, 0.02% sodium azide and 50% glycerol, 0.4-0.5mg/ml BSA.

#### Immunogen

A synthesized peptide derived from human Peroxiredoxin 4

#### Purification

Affinity-chromatography

#### Storage

Store at -20°C for one year. For short term storage and frequent use, store at 4°C for up to one month. Avoid repeated freeze-thaw cycles.

#### Anti-Peroxiredoxin 4 Rabbit Monoclonal Antibody - Protein Information

Name PRDX4

Function

Thiol-specific peroxidase that catalyzes the reduction of hydrogen peroxide and organic hydroperoxides to water and alcohols, respectively. Plays a role in cell protection against oxidative stress by detoxifying peroxides and as sensor of hydrogen peroxide-mediated signaling events. Regulates the activation of NF-kappa-B in the cytosol by a modulation of I-kappa-B-alpha phosphorylation.

#### Cellular Location

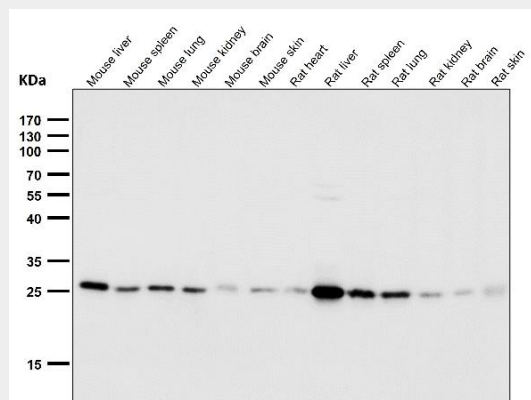
Cytoplasm. Endoplasmic reticulum. Note=Cotranslationally translocated to and retained within the endoplasmic reticulum. A small fraction of the protein is cytoplasmic.

### Anti-Peroxiredoxin 4 Rabbit Monoclonal Antibody - Protocols

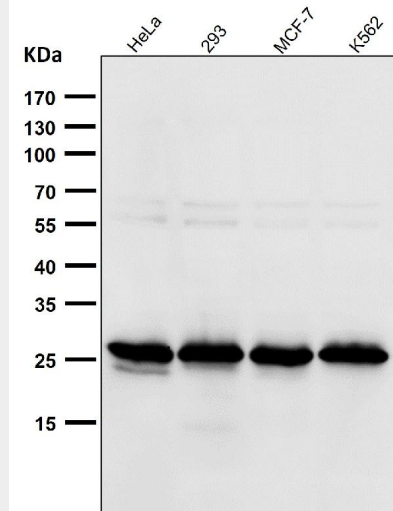
Provided below are standard protocols that you may find useful for product applications.

- [Western Blot](#)
- [Blocking Peptides](#)
- [Dot Blot](#)
- [Immunohistochemistry](#)
- [Immunofluorescence](#)
- [Immunoprecipitation](#)
- [Flow Cytometry](#)
- [Cell Culture](#)

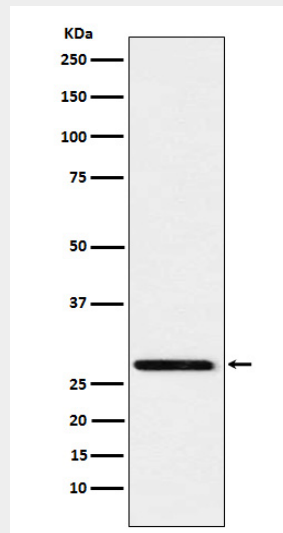
### Anti-Peroxiredoxin 4 Rabbit Monoclonal Antibody - Images



All lanes use the Antibody at 1:1W dilution for 1 hour at room temperature.



All lanes use the Antibody at 1:1W dilution for 1 hour at room temperature.



Western blot analysis of Peroxiredoxin 4 expression in HeLa cell lysate.