

Anti-E1 Ubiquitin Activating Enzyme Rabbit Monoclonal Antibody
Catalog # ABO15316**Specification****Anti-E1 Ubiquitin Activating Enzyme Rabbit Monoclonal Antibody - Product Information**

Application	WB, IHC, IF, ICC, FC
Primary Accession	P22314
Host	Rabbit
Isotype	IgG
Reactivity	Rat, Human, Mouse
Clonality	Monoclonal
Format	Liquid

Description

Anti-E1 Ubiquitin Activating Enzyme Rabbit Monoclonal Antibody . Tested in WB, IHC, ICC/IF, Flow Cytometry applications. This antibody reacts with Human, Mouse, Rat.

Anti-E1 Ubiquitin Activating Enzyme Rabbit Monoclonal Antibody - Additional Information

Gene ID 7317

Other Names

Ubiquitin-like modifier-activating enzyme 1, 6.2.1.45, Protein A1S9, Ubiquitin-activating enzyme E1, UBA1, A1S9T, UBE1

Calculated MW

118 kDa KDa

Application Details

WB 1:500-1:2000
IHC 1:50-1:200
ICC/IF 1:50-1:200
FC 1:50

Contents

Rabbit IgG in phosphate buffered saline, pH 7.4, 150mM NaCl, 0.02% sodium azide and 50% glycerol, 0.4-0.5mg/ml BSA.

Immunogen

A synthesized peptide derived from human E1 Ubiquitin Activating Enzyme

Purification

Affinity-chromatography

Storage

Store at -20°C for one year. For short term storage and frequent use, store at 4°C for up to one month. Avoid repeated freeze-thaw cycles.

Anti-E1 Ubiquitin Activating Enzyme Rabbit Monoclonal Antibody - Protein Information

Name UBA1

Synonyms A1S9T, UBE1

Function

Catalyzes the first step in ubiquitin conjugation to mark cellular proteins for degradation through the ubiquitin-proteasome system (PubMed:1447181, PubMed:1606621, PubMed:33108101). Activates ubiquitin by first adenylating its C-terminal glycine residue with ATP, and thereafter linking this residue to the side chain of a cysteine residue in E1, yielding a ubiquitin-E1 thioester and free AMP (PubMed:1447181). Essential for the formation of radiation-induced foci, timely DNA repair and for response to replication stress. Promotes the recruitment of TP53BP1 and BRCA1 at DNA damage sites (PubMed:22456334).

Cellular Location

Cytoplasm. Mitochondrion. Nucleus [Isoform 2]: Cytoplasm

Tissue Location

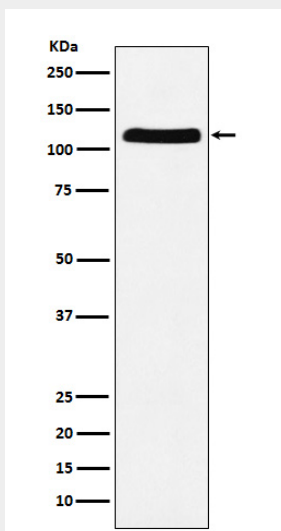
Detected in erythrocytes (at protein level). Ubiquitous.

Anti-E1 Ubiquitin Activating Enzyme Rabbit Monoclonal Antibody - Protocols

Provided below are standard protocols that you may find useful for product applications.

- [Western Blot](#)
- [Blocking Peptides](#)
- [Dot Blot](#)
- [Immunohistochemistry](#)
- [Immunofluorescence](#)
- [Immunoprecipitation](#)
- [Flow Cytometry](#)
- [Cell Culture](#)

Anti-E1 Ubiquitin Activating Enzyme Rabbit Monoclonal Antibody - Images



Western blot analysis of E1 Ubiquitin Activating Enzyme expression in HeLa cell lysate.