

Anti-eIF2B epsilon Rabbit Monoclonal Antibody Catalog # ABO15309

Specification

Anti-eIF2B epsilon Rabbit Monoclonal Antibody - Product Information

Application	WB, IHC, IF, ICC
Primary Accession	Q13144
Host	Rabbit
Isotype	IgG
Reactivity	Human
Clonality	Monoclonal
Format	Liquid

Description

Anti-eIF2B epsilon Rabbit Monoclonal Antibody . Tested in WB, IHC, ICC/IF applications. This antibody reacts with Human.

Anti-eIF2B epsilon Rabbit Monoclonal Antibody - Additional Information

Gene ID 8893

Other Names

Translation initiation factor eIF2B subunit epsilon, eIF2B GDP-GTP exchange factor subunit epsilon, EIF2B5, EIF2BE

Calculated MW

80 kDa KDa

Application Details

WB 1:500-1:2000
IHC 1:50-1:200
ICC/IF 1:50-1:200

Contents

Rabbit IgG in phosphate buffered saline, pH 7.4, 150mM NaCl, 0.02% sodium azide and 50% glycerol, 0.4-0.5mg/ml BSA.

Immunogen

A synthesized peptide derived from human eIF2B epsilon

Purification

Affinity-chromatography

Storage

Store at -20°C for one year. For short term storage and frequent use, store at 4°C for up to one month. Avoid repeated freeze-thaw cycles.

Anti-eIF2B epsilon Rabbit Monoclonal Antibody - Protein Information

Name EIF2B5

Synonyms EIF2BE

Function

Acts as a component of the translation initiation factor 2B (eIF2B) complex, which catalyzes the exchange of GDP for GTP on eukaryotic initiation factor 2 (eIF2) gamma subunit (PubMed:25858979, PubMed:27023709, PubMed:31048492). Its guanine nucleotide exchange factor activity is repressed when bound to eIF2 complex phosphorylated on the alpha subunit, thereby limiting the amount of methionyl- initiator methionine tRNA available to the ribosome and consequently global translation is repressed (PubMed:25858979, PubMed:31048492).

Cellular Location

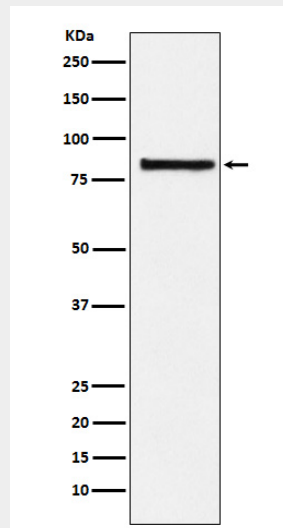
Cytoplasm, cytosol {ECO:0000250|UniProtKB:P56287}

Anti-eIF2B epsilon Rabbit Monoclonal Antibody - Protocols

Provided below are standard protocols that you may find useful for product applications.

- [Western Blot](#)
- [Blocking Peptides](#)
- [Dot Blot](#)
- [Immunohistochemistry](#)
- [Immunofluorescence](#)
- [Immunoprecipitation](#)
- [Flow Cytometry](#)
- [Cell Culture](#)

Anti-eIF2B epsilon Rabbit Monoclonal Antibody - Images



Western blot analysis of eIF2B epsilon expression in HeLa cell lysate.