

Anti-Mast Cell Chymase Rabbit Monoclonal Antibody Catalog # ABO15307

Specification

Anti-Mast Cell Chymase Rabbit Monoclonal Antibody - Product Information

Application	WB, IHC
Primary Accession	P23946
Host	Rabbit
Isotype	IgG
Reactivity	Human
Clonality	Monoclonal
Format	Liquid

Description

Anti-Mast Cell Chymase Rabbit Monoclonal Antibody . Tested in WB, IHC applications. This antibody reacts with Human.

Anti-Mast Cell Chymase Rabbit Monoclonal Antibody - Additional Information

Gene ID 1215

Other Names

Chymase, 3.4.21.39, Alpha-chymase, Mast cell protease I, CMA1, CYH, CYM

Application Details

WB 1:1000-1:5000
IHC 1:50-1:200

Contents

Rabbit IgG in phosphate buffered saline, pH 7.4, 150mM NaCl, 0.02% sodium azide and 50% glycerol, 0.4-0.5mg/ml BSA.

Immunogen

A synthesized peptide derived from human Mast Cell Chymase

Purification

Affinity-chromatography

Storage

Store at -20°C for one year. For short term storage and frequent use, store at 4°C for up to one month. Avoid repeated freeze-thaw cycles.

Anti-Mast Cell Chymase Rabbit Monoclonal Antibody - Protein Information

Name CMA1

Synonyms CYH, CYM

Function

Major secreted protease of mast cells with suspected roles in vasoactive peptide generation, extracellular matrix degradation, and regulation of gland secretion.

Cellular Location

Secreted. Cytoplasmic granule. Note=Mast cell granules

Tissue Location

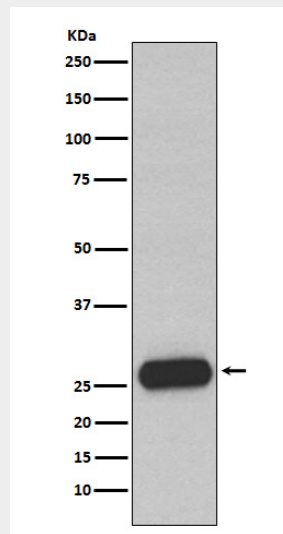
Mast cells in lung, heart, skin and placenta. Expressed in both normal skin and in urticaria pigmentosa lesions

Anti-Mast Cell Chymase Rabbit Monoclonal Antibody - Protocols

Provided below are standard protocols that you may find useful for product applications.

- [Western Blot](#)
- [Blocking Peptides](#)
- [Dot Blot](#)
- [Immunohistochemistry](#)
- [Immunofluorescence](#)
- [Immunoprecipitation](#)
- [Flow Cytometry](#)
- [Cell Culture](#)

Anti-Mast Cell Chymase Rabbit Monoclonal Antibody - Images



Western blot analysis of Mast Cell Chymase expression in Human small intestine lysate.