

## Anti-ELMO1 Rabbit Monoclonal Antibody Catalog # ABO15303

### Specification

---

#### Anti-ELMO1 Rabbit Monoclonal Antibody - Product Information

Application	WB, IF, ICC, IP, FC
Primary Accession	<a href="#">Q92556</a>
Host	Rabbit
Isotype	IgG
Reactivity	Rat, Human, Mouse
Clonality	Monoclonal
Format	Liquid

#### Description

Anti-ELMO1 Rabbit Monoclonal Antibody . Tested in WB, ICC/IF, IP, Flow Cytometry applications. This antibody reacts with Human, Mouse, Rat.

#### Anti-ELMO1 Rabbit Monoclonal Antibody - Additional Information

**Gene ID** 9844

#### Other Names

Engulfment and cell motility protein 1, Protein ced-12 homolog, ELMO1, KIAA0281

#### Calculated MW

84 kDa KDa

#### Application Details

WB 1:500-1:2000<br>ICC/IF 1:50-1:200<br>IP 1:50<br>FC 1:50

#### Contents

Rabbit IgG in phosphate buffered saline, pH 7.4, 150mM NaCl, 0.02% sodium azide and 50% glycerol, 0.4-0.5mg/ml BSA.

#### Immunogen

A synthesized peptide derived from human ELMO1

#### Purification

Affinity-chromatography

Storage

**Store at -20°C for one year. For short term storage and frequent use, store at 4°C for up to one month. Avoid repeated freeze-thaw cycles.**

#### Anti-ELMO1 Rabbit Monoclonal Antibody - Protein Information

**Name** ELMO1

## Synonyms KIAA0281

### Function

Involved in cytoskeletal rearrangements required for phagocytosis of apoptotic cells and cell motility. Acts in association with DOCK1 and CRK. Was initially proposed to be required in complex with DOCK1 to activate Rac Rho small GTPases. May enhance the guanine nucleotide exchange factor (GEF) activity of DOCK1.

### Cellular Location

Cytoplasm. Cell membrane. Note=Translocation to plasma membrane seems to be mediated by DOCK1 and CRK

### Tissue Location

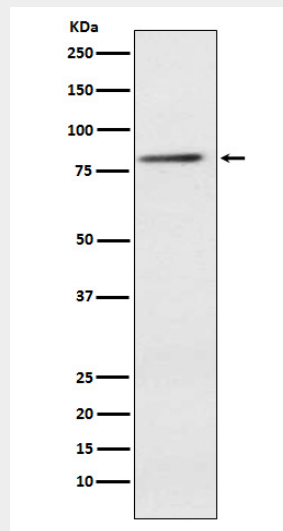
Widely expressed, with a higher expression in the spleen and placenta

## Anti-ELMO1 Rabbit Monoclonal Antibody - Protocols

Provided below are standard protocols that you may find useful for product applications.

- [Western Blot](#)
- [Blocking Peptides](#)
- [Dot Blot](#)
- [Immunohistochemistry](#)
- [Immunofluorescence](#)
- [Immunoprecipitation](#)
- [Flow Cytometry](#)
- [Cell Culture](#)

## Anti-ELMO1 Rabbit Monoclonal Antibody - Images



Western blot analysis of ELMO1 expression in Jurkat cell lysate.