

**Anti-ALDH1L1 Rabbit Monoclonal Antibody**  
Catalog # ABO15301**Specification****Anti-ALDH1L1 Rabbit Monoclonal Antibody - Product Information**

Application	WB
Primary Accession	<a href="#">O75891</a>
Host	Rabbit
Isotype	IgG
Reactivity	Rat, Human, Mouse
Clonality	Monoclonal
Format	Liquid

**Description**

Anti-ALDH1L1 Rabbit Monoclonal Antibody . Tested in WB application. This antibody reacts with Human, Mouse, Rat.

**Anti-ALDH1L1 Rabbit Monoclonal Antibody - Additional Information**

**Gene ID** 10840

**Other Names**

Cytosolic 10-formyltetrahydrofolate dehydrogenase, 10-FTHFDH, FDH, 1.5.1.6, Aldehyde dehydrogenase family 1 member L1 {ECO:0000312|HGNC:HGNC:3978}, ALDH1L1 ([HGNC:3978](http://www.genenames.org/cgi-bin/gene_symbol_report?hgnc_id=3978)), FTHFD

**Application Details**

WB 1:500-1:2000

**Contents**

Rabbit IgG in phosphate buffered saline, pH 7.4, 150mM NaCl, 0.02% sodium azide and 50% glycerol, 0.4-0.5mg/ml BSA.

**Immunogen**

A synthesized peptide derived from human ALDH1L1

**Purification**

Affinity-chromatography

Storage

**Store at -20°C for one year. For short term storage and frequent use, store at 4°C for up to one month. Avoid repeated freeze-thaw cycles.**

**Anti-ALDH1L1 Rabbit Monoclonal Antibody - Protein Information**

**Name** ALDH1L1 ([HGNC:3978](#))

## Synonyms FTHFD

### Function

Cytosolic 10-formyltetrahydrofolate dehydrogenase that catalyzes the NADP(+)-dependent conversion of 10-formyltetrahydrofolate to tetrahydrofolate and carbon dioxide (PubMed:<a href="http://www.uniprot.org/citations/19933275" target="\_blank">19933275</a>, PubMed:<a href="http://www.uniprot.org/citations/21238436" target="\_blank">21238436</a>). May also have an NADP(+)-dependent aldehyde dehydrogenase activity towards formaldehyde, acetaldehyde, propionaldehyde, and benzaldehyde (By similarity).

### Cellular Location

Cytoplasm, cytosol.

### Tissue Location

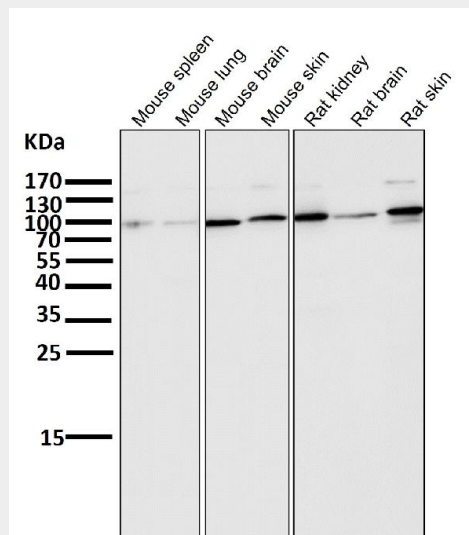
Highly expressed in liver, pancreas and kidney.

## Anti-ALDH1L1 Rabbit Monoclonal Antibody - Protocols

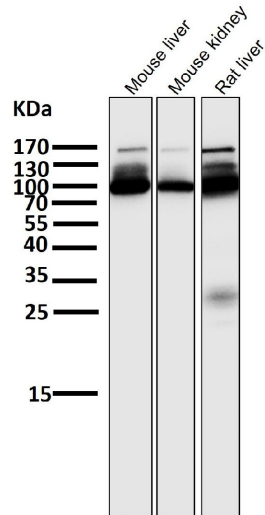
Provided below are standard protocols that you may find useful for product applications.

- [Western Blot](#)
- [Blocking Peptides](#)
- [Dot Blot](#)
- [Immunohistochemistry](#)
- [Immunofluorescence](#)
- [Immunoprecipitation](#)
- [Flow Cytometry](#)
- [Cell Culture](#)

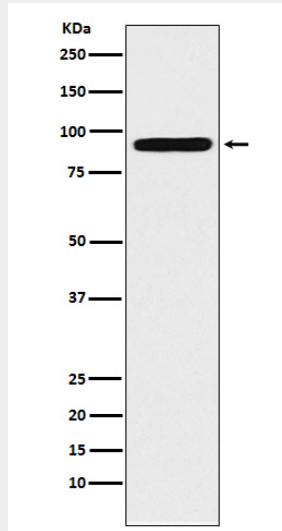
## Anti-ALDH1L1 Rabbit Monoclonal Antibody - Images



All lanes use the Antibody at 1:5K dilution for 1 hour at room temperature.



All lanes use the Antibody at 1:5K dilution for 1 hour at room temperature.



Western blot analysis of ALDH1L1 expression in 293T cell lysate.