

Anti-Sprouty 4 Rabbit Monoclonal Antibody Catalog # ABO15287

Specification

Anti-Sprouty 4 Rabbit Monoclonal Antibody - Product Information

Application	WB, IF, ICC, IP, FC
Primary Accession	O9C004
Host	Rabbit
Isotype	IgG
Reactivity	Rat, Human, Mouse
Clonality	Monoclonal
Format	Liquid

Description

Anti-Sprouty 4 Rabbit Monoclonal Antibody . Tested in WB, ICC/IF, IP, Flow Cytometry applications. This antibody reacts with Human, Mouse, Rat.

Anti-Sprouty 4 Rabbit Monoclonal Antibody - Additional Information

Gene ID 81848

Other Names

Protein sprouty homolog 4, Spry-4, SPRY4

Calculated MW

35 kDa KDa

Application Details

WB 1:500-1:2000
ICC/IF 1:50-1:200
IP 1:50
FC 1:50

Contents

Rabbit IgG in phosphate buffered saline, pH 7.4, 150mM NaCl, 0.02% sodium azide and 50% glycerol, 0.4-0.5mg/ml BSA.

Immunogen

A synthesized peptide derived from human Sprouty 4

Purification

Affinity-chromatography

Storage

Store at -20°C for one year. For short term storage and frequent use, store at 4°C for up to one month. Avoid repeated freeze-thaw cycles.

Anti-Sprouty 4 Rabbit Monoclonal Antibody - Protein Information

Name SPRY4

Function

Suppresses the insulin receptor and EGFR-transduced MAPK signaling pathway, but does not inhibit MAPK activation by a constitutively active mutant Ras (PubMed:12027893). Probably impairs the formation of GTP-Ras (PubMed:12027893). Inhibits Ras-independent, but not Ras-dependent, activation of RAF1 (PubMed:12717443). Represses integrin-mediated cell spreading via inhibition of TESK1-mediated phosphorylation of cofilin (PubMed:15584898).

Cellular Location

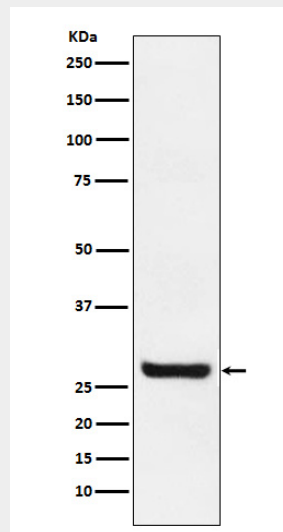
Cytoplasm. Cell projection, ruffle membrane; Peripheral membrane protein; Cytoplasmic side. Note=Found in the cytoplasm in unstimulated cells but is translocated to the membrane ruffles in cells stimulated with EGF (epidermal growth factor) (By similarity). Colocalizes with TESK1 in vesicular spots in the cytoplasm (PubMed:15584898) {ECO:0000250|UniProtKB:Q9WTP2, ECO:0000269|PubMed:15584898}

Anti-Sprouty 4 Rabbit Monoclonal Antibody - Protocols

Provided below are standard protocols that you may find useful for product applications.

- [Western Blot](#)
- [Blocking Peptides](#)
- [Dot Blot](#)
- [Immunohistochemistry](#)
- [Immunofluorescence](#)
- [Immunoprecipitation](#)
- [Flow Cytometry](#)
- [Cell Culture](#)

Anti-Sprouty 4 Rabbit Monoclonal Antibody - Images



Western blot analysis of Sprouty 4 expression in MCF7 cell lysate.