

Anti-EB3 Rabbit Monoclonal Antibody Catalog # ABO15280

Specification

Anti-EB3 Rabbit Monoclonal Antibody - Product Information

Application	WB, IHC, IF, ICC, FC
Primary Accession	Q9UPY8
Host	Rabbit
Isotype	IgG
Reactivity	Rat, Human, Mouse
Clonality	Monoclonal
Format	Liquid

Description

Anti-EB3 Rabbit Monoclonal Antibody . Tested in WB, IHC, ICC/IF, Flow Cytometry applications. This antibody reacts with Human, Mouse, Rat.

Anti-EB3 Rabbit Monoclonal Antibody - Additional Information

Gene ID 22924

Other Names

Microtubule-associated protein RP/EB family member 3, EB1 protein family member 3, EBF3, End-binding protein 3, EB3, RP3, MAPRE3

Application Details

WB 1:1000-1:5000
IHC 1:50-1:200
ICC/IF 1:50-1:200
FC 1:50

Contents

Rabbit IgG in phosphate buffered saline, pH 7.4, 150mM NaCl, 0.02% sodium azide and 50% glycerol, 0.4-0.5mg/ml BSA.

Immunogen

A synthesized peptide derived from human EB3

Purification

Affinity-chromatography

Storage

Store at -20°C for one year. For short term storage and frequent use, store at 4°C for up to one month. Avoid repeated freeze-thaw cycles.

Anti-EB3 Rabbit Monoclonal Antibody - Protein Information

Name MAPRE3

Function

Plus-end tracking protein (+TIP) that binds to the plus-end of microtubules and regulates the

dynamics of the microtubule cytoskeleton (PubMed:19255245, PubMed:28814570). Promotes microtubule growth (PubMed:19255245, PubMed:28814570). May be involved in spindle function by stabilizing microtubules and anchoring them at centrosomes (PubMed:19255245, PubMed:28814570). Also acts as a regulator of minus- end microtubule organization: interacts with the complex formed by AKAP9 and PDE4DIP, leading to recruit CAMSAP2 to the Golgi apparatus, thereby tethering non-centrosomal minus-end microtubules to the Golgi, an important step for polarized cell movement (PubMed:28814570). Promotes elongation of CAMSAP2-decorated microtubule stretches on the minus-end of microtubules (PubMed:28814570).

Cellular Location

Cytoplasm, cytoskeleton. Note=Associated with the microtubule network. Detected at the plus end of microtubules

Tissue Location

Predominantly expressed in brain and muscle.

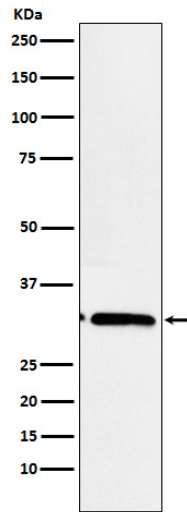
Anti-EB3 Rabbit Monoclonal Antibody - Protocols

Provided below are standard protocols that you may find useful for product applications.

- [Western Blot](#)
- [Blocking Peptides](#)
- [Dot Blot](#)
- [Immunohistochemistry](#)
- [Immunofluorescence](#)
- [Immunoprecipitation](#)
- [Flow Cytometry](#)
- [Cell Culture](#)

Anti-EB3 Rabbit Monoclonal Antibody - Images





Western blot analysis of EB3 expression in Rat muscle cell lysate.