

Anti-CXCL11 Rabbit Monoclonal Antibody
Catalog # ABO15278**Specification**

Anti-CXCL11 Rabbit Monoclonal Antibody - Product Information

Application	WB, IF, ICC
Primary Accession	O14625
Host	Rabbit
Isotype	IgG
Reactivity	Human
Clonality	Monoclonal
Format	Liquid

Description

Anti-CXCL11 Rabbit Monoclonal Antibody . Tested in WB, ICC/IF applications. This antibody reacts with Human.

Anti-CXCL11 Rabbit Monoclonal Antibody - Additional Information

Gene ID 6373

Other Names

C-X-C motif chemokine 11, Beta-R1, H174, Interferon gamma-inducible protein 9, IP-9, Interferon-inducible T-cell alpha chemoattractant, I-TAC, Small-inducible cytokine B11, CXCL11, ITAC, SCYB11, SCYB9B

Calculated MW

15 kDa KDa

Application Details

WB 1:500-1:2000
ICC/IF 1:50-1:200

Contents

Rabbit IgG in phosphate buffered saline, pH 7.4, 150mM NaCl, 0.02% sodium azide and 50% glycerol, 0.4-0.5mg/ml BSA.

Immunogen

A synthesized peptide derived from human CXCL11

Purification

Affinity-chromatography

Storage

Store at -20°C for one year. For short term storage and frequent use, store at 4°C for up to one month. Avoid repeated freeze-thaw cycles.

Anti-CXCL11 Rabbit Monoclonal Antibody - Protein Information

Name CXCL11

Synonyms ITAC, SCYB11, SCYB9B

Function

Chemotactic for interleukin-activated T-cells but not unstimulated T-cells, neutrophils or monocytes. Induces calcium release in activated T-cells. Binds to CXCR3. May play an important role in CNS diseases which involve T-cell recruitment. May play a role in skin immune responses.

Cellular Location

Secreted.

Tissue Location

High levels in peripheral blood leukocytes, pancreas and liver astrocytes. Moderate levels in thymus, spleen and lung. Low levels in placenta, prostate and small intestine. Also found in epidermal basal layer keratinocytes in skin disorders

Anti-CXCL11 Rabbit Monoclonal Antibody - Protocols

Provided below are standard protocols that you may find useful for product applications.

- [Western Blot](#)
- [Blocking Peptides](#)
- [Dot Blot](#)
- [Immunohistochemistry](#)
- [Immunofluorescence](#)
- [Immunoprecipitation](#)
- [Flow Cytometry](#)
- [Cell Culture](#)

Anti-CXCL11 Rabbit Monoclonal Antibody - Images

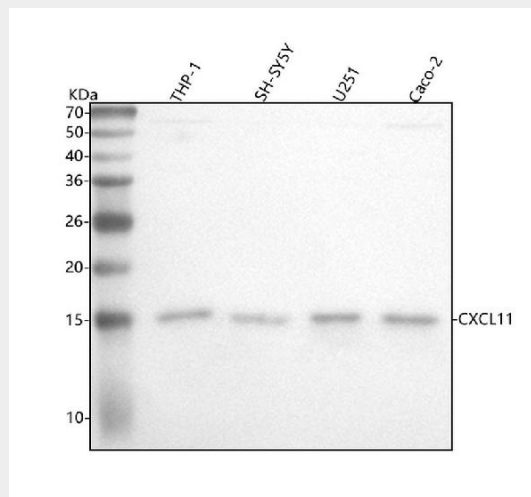


Figure 1. Western blot analysis of CXCL11 using anti-CXCL11 antibody (M01833).

Electrophoresis was performed on a 5-20% SDS-PAGE gel at 70V (Stacking gel) / 90V (Resolving gel) for 2-3 hours. The sample well of each lane was loaded with 30 ug of sample under reducing conditions.

Lane 1: human THP-1 whole cell lysates,

Lane 2: human SH-SY5Y whole cell lysates,

Lane 3: human U251 whole cell lysates,
Lane 4: human CACO-2 whole cell lysates.

After electrophoresis, proteins were transferred to a nitrocellulose membrane at 150 mA for 50-90 minutes. Blocked the membrane with 5% non-fat milk/TBS for 1.5 hour at RT. The membrane was incubated with rabbit anti-CXCL11 antigen affinity purified monoclonal antibody (Catalog # M01833) at 1:500 overnight at 4°C, then washed with TBS-0.1%Tween 3 times with 5 minutes each and probed with a goat anti-rabbit IgG-HRP secondary antibody at a dilution of 1:500 for 1.5 hour at RT. The signal is developed using an Enhanced Chemiluminescent detection (ECL) kit (Catalog # EK1002) with Tanon 5200 system. A specific band was detected for CXCL11 at approximately 15 kDa. The expected band size for CXCL11 is at 10 kDa.