

Anti-DEK Rabbit Monoclonal Antibody Catalog # ABO15277

Specification

Anti-DEK Rabbit Monoclonal Antibody - Product Information

Application	WB, IHC, IF, ICC, IP
Primary Accession	P35659
Host	Rabbit
Isotype	IgG
Reactivity	Rat, Human
Clonality	Monoclonal
Format	Liquid

Description

Anti-DEK Rabbit Monoclonal Antibody . Tested in WB, IHC, ICC/IF, IP applications. This antibody reacts with Human, Rat.

Anti-DEK Rabbit Monoclonal Antibody - Additional Information

Gene ID 7913

Other Names

Protein DEK, DEK

Calculated MW

43 kDa KDa

Application Details

WB 1:500-1:2000
IHC 1:50-1:200
ICC/IF 1:50-1:200
IP 1:50

Contents

Rabbit IgG in phosphate buffered saline, pH 7.4, 150mM NaCl, 0.02% sodium azide and 50% glycerol, 0.4-0.5mg/ml BSA.

Immunogen

A synthesized peptide derived from human DEK

Purification

Affinity-chromatography

Storage

Store at -20°C for one year. For short term storage and frequent use, store at 4°C for up to one month. Avoid repeated freeze-thaw cycles.

Anti-DEK Rabbit Monoclonal Antibody - Protein Information

Name DEK

Function

Involved in chromatin organization.

Cellular Location

Nucleus. Note=Enriched in regions where chromatin is decondensed or sparse in the interphase nuclei

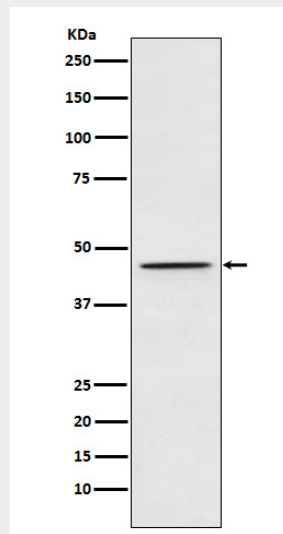
Tissue Location

Ubiquitous. Expressed at relatively high levels.

Anti-DEK Rabbit Monoclonal Antibody - Protocols

Provided below are standard protocols that you may find useful for product applications.

- [Western Blot](#)
- [Blocking Peptides](#)
- [Dot Blot](#)
- [Immunohistochemistry](#)
- [Immunofluorescence](#)
- [Immunoprecipitation](#)
- [Flow Cytometry](#)
- [Cell Culture](#)

Anti-DEK Rabbit Monoclonal Antibody - Images

Western blot analysis of DEK expression in 293T cell lysate.