

Anti-PSME1 Rabbit Monoclonal Antibody
Catalog # ABO15275**Specification****Anti-PSME1 Rabbit Monoclonal Antibody - Product Information**

Application	WB, IF, ICC, IP
Primary Accession	Q06323
Host	Rabbit
Isotype	IgG
Reactivity	Rat, Human, Mouse
Clonality	Monoclonal
Format	Liquid

Description

Anti-PSME1 Rabbit Monoclonal Antibody . Tested in WB, ICC/IF, IP applications. This antibody reacts with Human, Mouse, Rat.

Anti-PSME1 Rabbit Monoclonal Antibody - Additional Information

Gene ID 5720

Other Names

Proteasome activator complex subunit 1, 11S regulator complex subunit alpha, REG-alpha, Activator of multicatalytic protease subunit 1, Interferon gamma up-regulated I-5111 protein, IGUP I-5111, Proteasome activator 28 subunit alpha, PA28a, PA28alpha, PSME1, IFI5111

Application Details

WB 1:500-1:2000
ICC/IF 1:50-1:200
IP 1:50

Contents

Rabbit IgG in phosphate buffered saline, pH 7.4, 150mM NaCl, 0.02% sodium azide and 50% glycerol, 0.4-0.5mg/ml BSA.

Immunogen

A synthesized peptide derived from human PSME1

Purification

Affinity-chromatography

Storage

Store at -20°C for one year. For short term storage and frequent use, store at 4°C for up to one month. Avoid repeated freeze-thaw cycles.

Anti-PSME1 Rabbit Monoclonal Antibody - Protein Information

Name PSME1

Synonyms IFI5111

Function

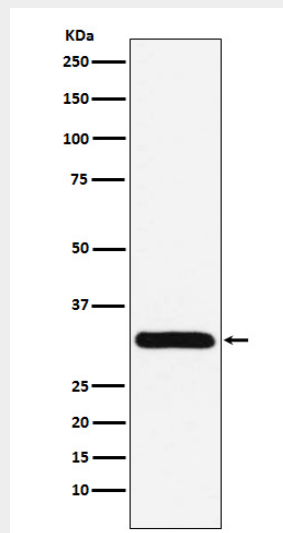
Implicated in immunoproteasome assembly and required for efficient antigen processing. The PA28 activator complex enhances the generation of class I binding peptides by altering the cleavage pattern of the proteasome.

Anti-PSME1 Rabbit Monoclonal Antibody - Protocols

Provided below are standard protocols that you may find useful for product applications.

- [Western Blot](#)
- [Blocking Peptides](#)
- [Dot Blot](#)
- [Immunohistochemistry](#)
- [Immunofluorescence](#)
- [Immunoprecipitation](#)
- [Flow Cytometry](#)
- [Cell Culture](#)

Anti-PSME1 Rabbit Monoclonal Antibody - Images



Western blot analysis of PSME1 expression in Jurkat cell lysate.