

Anti-Fructose 6 Phosphate Kinase Rabbit Monoclonal Antibody Catalog # ABO15273

Specification

Anti-Fructose 6 Phosphate Kinase Rabbit Monoclonal Antibody - Product Information

Application	WB, IF, ICC, FC
Primary Accession	P08237
Host	Rabbit
Isotype	IgG
Reactivity	Rat, Human, Mouse
Clonality	Monoclonal
Format	Liquid

Description

Anti-Fructose 6 Phosphate Kinase Rabbit Monoclonal Antibody . Tested in WB, ICC/IF, Flow Cytometry applications. This antibody reacts with Human, Mouse, Rat.

Anti-Fructose 6 Phosphate Kinase Rabbit Monoclonal Antibody - Additional Information

Gene ID 5213

Other Names

ATP-dependent 6-phosphofructokinase, muscle type {ECO:0000255|HAMAP-Rule:MF_03184}, ATP-PFK {ECO:0000255|HAMAP-Rule:MF_03184}, PFK-M, 2.7.1.11 {ECO:0000255|HAMAP-Rule:MF_03184}, 6-phosphofructokinase type A, Phosphofructo-1-kinase isozyme A, PFK-A, Phosphohexokinase {ECO:0000255|HAMAP-Rule:MF_03184}, PFKM, PFKX

Application Details

WB 1:500-1:2000
ICC/IF 1:50-1:200
FC 1:100

Contents

Rabbit IgG in phosphate buffered saline, pH 7.4, 150mM NaCl, 0.02% sodium azide and 50% glycerol, 0.4-0.5mg/ml BSA.

Immunogen

A synthesized peptide derived from human Fructose 6 Phosphate Kinase

Purification

Affinity-chromatography

Storage

Store at -20°C for one year. For short term storage and frequent use, store at 4°C for up to one month. Avoid repeated freeze-thaw cycles.

Anti-Fructose 6 Phosphate Kinase Rabbit Monoclonal Antibody - Protein Information

Name PFKM

Synonyms PFKX

Function

Catalyzes the phosphorylation of D-fructose 6-phosphate to fructose 1,6-bisphosphate by ATP, the first committing step of glycolysis.

Cellular Location

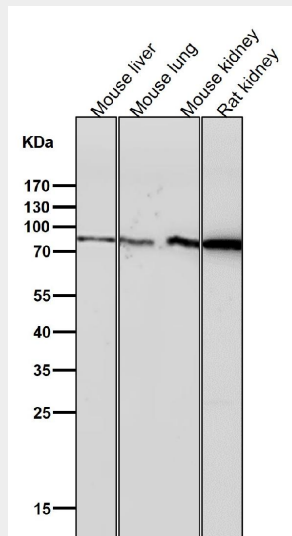
Cytoplasm {ECO:0000255|HAMAP-Rule:MF_03184}.

Anti-Fructose 6 Phosphate Kinase Rabbit Monoclonal Antibody - Protocols

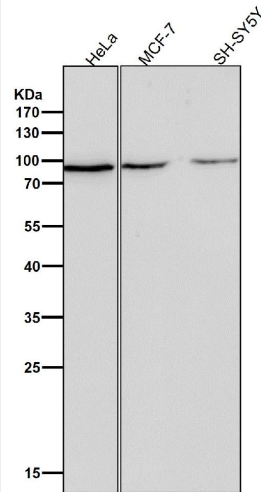
Provided below are standard protocols that you may find useful for product applications.

- [Western Blot](#)
- [Blocking Peptides](#)
- [Dot Blot](#)
- [Immunohistochemistry](#)
- [Immunofluorescence](#)
- [Immunoprecipitation](#)
- [Flow Cytometry](#)
- [Cell Culture](#)

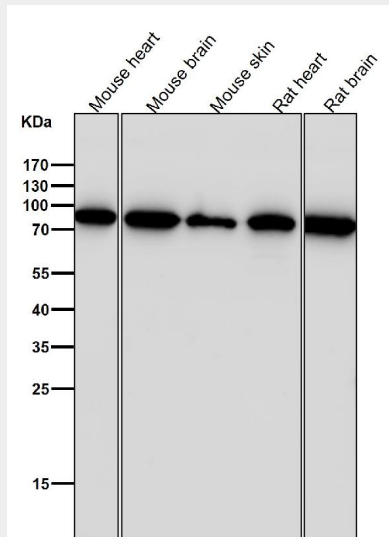
Anti-Fructose 6 Phosphate Kinase Rabbit Monoclonal Antibody - Images



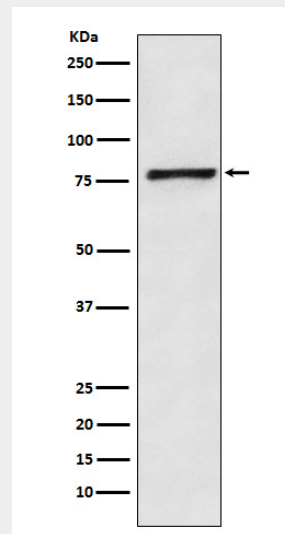
All lanes use the Antibody at 1:2K dilution for 1 hour at room temperature.



All lanes use the Antibody at 1:2K dilution for 1 hour at room temperature.



All lanes use the Antibody at 1:2K dilution for 1 hour at room temperature.



Western blot analysis of Fructose 6 Phosphate Kinase expression in HeLa cell lysate.