

Anti-eIF2A Rabbit Monoclonal Antibody
Catalog # ABO15248**Specification****Anti-eIF2A Rabbit Monoclonal Antibody - Product Information**

Application	WB, IHC, IF, ICC
Primary Accession	Q9BY44
Host	Rabbit
Isotype	IgG
Reactivity	Rat, Human, Mouse
Clonality	Monoclonal
Format	Liquid

Description

Anti-eIF2A Rabbit Monoclonal Antibody . Tested in WB, IHC, ICC/IF applications. This antibody reacts with Human, Mouse, Rat.

Anti-eIF2A Rabbit Monoclonal Antibody - Additional Information

Gene ID 83939

Other Names

Eukaryotic translation initiation factor 2A, eIF-2A, 65 kDa eukaryotic translation initiation factor 2A, Eukaryotic translation initiation factor 2A, N-terminally processed, EIF2A

Calculated MW

65 kDa KDa

Application Details

WB 1:500-1:2000
IHC 1:50-1:200
ICC/IF 1:50-1:200

Contents

Rabbit IgG in phosphate buffered saline, pH 7.4, 150mM NaCl, 0.02% sodium azide and 50% glycerol, 0.4-0.5mg/ml BSA.

Immunogen

A synthesized peptide derived from human eIF2A

Purification

Affinity-chromatography

Storage

Store at -20°C for one year. For short term storage and frequent use, store at 4°C for up to one month. Avoid repeated freeze-thaw cycles.

Anti-eIF2A Rabbit Monoclonal Antibody - Protein Information

Name EIF2A

Function

Functions in the early steps of protein synthesis of a small number of specific mRNAs. Acts by directing the binding of methionyl- tRNA_i to 40S ribosomal subunits. In contrast to the eIF-2 complex, it binds methionyl-tRNA_i to 40S subunits in a codon-dependent manner, whereas the eIF-2 complex binds methionyl-tRNA_i to 40S subunits in a GTP-dependent manner.

Tissue Location

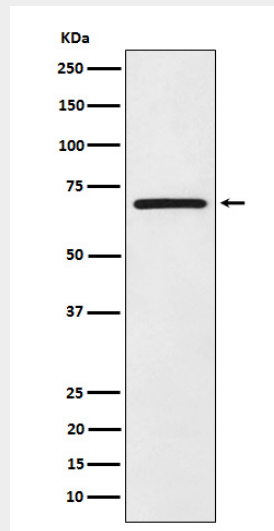
Widely expressed. Expressed at higher level in pancreas, heart, brain and placenta.

Anti-eIF2A Rabbit Monoclonal Antibody - Protocols

Provided below are standard protocols that you may find useful for product applications.

- [Western Blot](#)
- [Blocking Peptides](#)
- [Dot Blot](#)
- [Immunohistochemistry](#)
- [Immunofluorescence](#)
- [Immunoprecipitation](#)
- [Flow Cytometry](#)
- [Cell Culture](#)

Anti-eIF2A Rabbit Monoclonal Antibody - Images



Western blot analysis of eIF2A expression in Ramos cell lysate.