

**Anti-CD30 Rabbit Monoclonal Antibody**  
Catalog # ABO15234**Specification****Anti-CD30 Rabbit Monoclonal Antibody - Product Information**

Application	WB, IHC
Primary Accession	<a href="#">P28908</a>
Host	Rabbit
Isotype	IgG
Reactivity	Human
Clonality	Monoclonal
Format	Liquid

**Description**

Anti-CD30 Rabbit Monoclonal Antibody . Tested in WB, IHC applications. This antibody reacts with Human.

**Anti-CD30 Rabbit Monoclonal Antibody - Additional Information**

Gene ID 943

**Other Names**

Tumor necrosis factor receptor superfamily member 8 {ECO:0000312|HGNC:HGNC:11923}, CD30L receptor, Ki-1 antigen, Lymphocyte activation antigen CD30, CD30, TNFRSF8 ([http://www.genenames.org/cgi-bin/gene\\_symbol\\_report?hgnc\\_id=11923](http://www.genenames.org/cgi-bin/gene_symbol_report?hgnc_id=11923))

**Application Details**

WB 1:500-1:2000<br>IHC 1:100-1:500

**Contents**

Rabbit IgG in phosphate buffered saline, pH 7.4, 150mM NaCl, 0.02% sodium azide and 50% glycerol, 0.4-0.5mg/ml BSA.

**Immunogen**

A synthesized peptide derived from human CD30

**Purification**

Affinity-chromatography

**Storage**

**Store at -20°C for one year. For short term storage and frequent use, store at 4°C for up to one month. Avoid repeated freeze-thaw cycles.**

**Anti-CD30 Rabbit Monoclonal Antibody - Protein Information**

Name TNFRSF8 ([HGNC:11923](#))

### Function

Receptor for TNFSF8/CD30L (PubMed:<a href="http://www.uniprot.org/citations/8391931" target="\_blank">8391931</a>). May play a role in the regulation of cellular growth and transformation of activated lymphoblasts. Regulates gene expression through activation of NF-kappa- B (PubMed:<a href="http://www.uniprot.org/citations/8999898" target="\_blank">8999898</a>).

### Cellular Location

[Isoform 1]: Cell membrane; Single-pass type I membrane protein

### Tissue Location

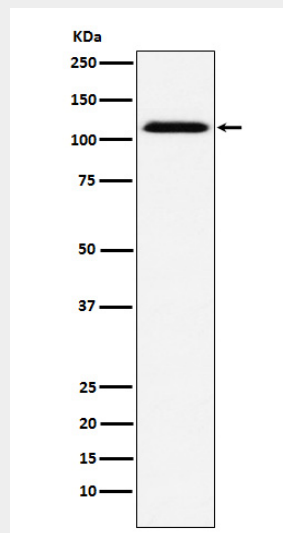
[Isoform 2]: Detected in alveolar macrophages (at protein level).

## Anti-CD30 Rabbit Monoclonal Antibody - Protocols

Provided below are standard protocols that you may find useful for product applications.

- [Western Blot](#)
- [Blocking Peptides](#)
- [Dot Blot](#)
- [Immunohistochemistry](#)
- [Immunofluorescence](#)
- [Immunoprecipitation](#)
- [Flow Cytometry](#)
- [Cell Culture](#)

## Anti-CD30 Rabbit Monoclonal Antibody - Images



Western blot analysis of CD30 expression in A431 cell lysate.