

## Anti-Langerin (CD207) Rabbit Monoclonal Antibody Catalog # ABO15225

### Specification

---

#### Anti-Langerin (CD207) Rabbit Monoclonal Antibody - Product Information

Application	IHC
Primary Accession	<a href="#">O9UJ71</a>
Host	Rabbit
Isotype	IgG
Reactivity	Human
Clonality	Monoclonal
Format	Liquid

#### Description

Anti-Langerin (CD207) Rabbit Monoclonal Antibody . Tested in IHC application. This antibody reacts with Human.

#### Anti-Langerin (CD207) Rabbit Monoclonal Antibody - Additional Information

**Gene ID** 50489

#### Other Names

C-type lectin domain family 4 member K, Langerin, CD207, CD207, CLEC4K

#### Application Details

IHC 1:50-1:200

#### Contents

Rabbit IgG in phosphate buffered saline, pH 7.4, 150mM NaCl, 0.02% sodium azide and 50% glycerol, 0.4-0.5mg/ml BSA.

#### Immunogen

A synthesized peptide derived from human Langerin (CD207)

#### Purification

Affinity-chromatography

Storage

**Store at -20°C for one year. For short term storage and frequent use, store at 4°C for up to one month. Avoid repeated freeze-thaw cycles.**

#### Anti-Langerin (CD207) Rabbit Monoclonal Antibody - Protein Information

**Name** CD207

**Synonyms** CLEC4K

**Function**

Calcium-dependent lectin displaying mannose-binding specificity. Induces the formation of Birbeck granules (BGs); is a potent regulator of membrane superimposition and zippering. Binds to sulfated as well as mannosylated glycans, keratan sulfate (KS) and beta-glucans. Facilitates uptake of antigens and is involved in the routing and/or processing of antigen for presentation to T cells. Major receptor on primary Langerhans cells for *Candida* species, *Saccharomyces* species, and *Malassezia furfur*. Protects against human immunodeficiency virus-1 (HIV-1) infection. Binds to high-mannose structures present on the envelope glycoprotein which is followed by subsequent targeting of the virus to the Birbeck granules leading to its rapid degradation.

#### **Cellular Location**

Membrane; Single-pass type II membrane protein. Note=Found in Birbeck granules (BGs), which are organelles consisting of superimposed and zippered membranes

#### **Tissue Location**

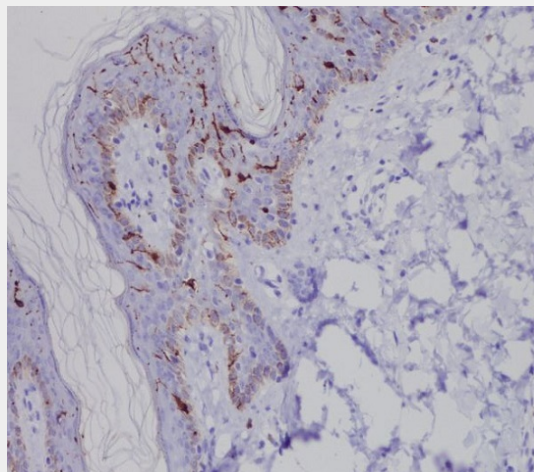
Exclusively expressed by Langerhans cells. Expressed in astrocytoma and malignant ependymoma, but not in normal brain tissues.

### **Anti-Langerin (CD207) Rabbit Monoclonal Antibody - Protocols**

Provided below are standard protocols that you may find useful for product applications.

- [Western Blot](#)
- [Blocking Peptides](#)
- [Dot Blot](#)
- [Immunohistochemistry](#)
- [Immunofluorescence](#)
- [Immunoprecipitation](#)
- [Flow Cytometry](#)
- [Cell Culture](#)

### **Anti-Langerin (CD207) Rabbit Monoclonal Antibody - Images**



Immunohistochemical analysis of paraffin-embedded human skin, using Langerin (CD207) Antibody.