

**Anti-Superoxide Dismutase 3 Rabbit Monoclonal Antibody**  
Catalog # ABO15205**Specification****Anti-Superoxide Dismutase 3 Rabbit Monoclonal Antibody - Product Information**

Application	WB, IHC
Primary Accession	<a href="#">P08294</a>
Host	Rabbit
Isotype	IgG
Reactivity	Human
Clonality	Monoclonal
Format	Liquid

**Description**

Anti-Superoxide Dismutase 3 Rabbit Monoclonal Antibody . Tested in WB, IHC applications. This antibody reacts with Human.

**Anti-Superoxide Dismutase 3 Rabbit Monoclonal Antibody - Additional Information**

**Gene ID** 6649

**Other Names**

Extracellular superoxide dismutase [Cu-Zn], EC-SOD, 1.15.1.1, SOD3

**Application Details**

WB 1:500-1:2000<br>IHC 1:50-1:200

**Contents**

Rabbit IgG in phosphate buffered saline, pH 7.4, 150mM NaCl, 0.02% sodium azide and 50% glycerol, 0.4-0.5mg/ml BSA.

**Immunogen**

A synthesized peptide derived from human Superoxide Dismutase 3

**Purification**

Affinity-chromatography

**Storage**

**Store at -20°C for one year. For short term storage and frequent use, store at 4°C for up to one month. Avoid repeated freeze-thaw cycles.**

**Anti-Superoxide Dismutase 3 Rabbit Monoclonal Antibody - Protein Information**

**Name** SOD3

**Function**

Protect the extracellular space from toxic effect of reactive oxygen intermediates by converting superoxide radicals into hydrogen peroxide and oxygen.

### Cellular Location

Secreted, extracellular space. Golgi apparatus, trans-Golgi network {ECO:0000250|UniProtKB:O09164}. Note=99% of EC-SOD is anchored to heparan sulfate proteoglycans in the tissue interstitium, and 1% is located in the vasculature in equilibrium between the plasma and the endothelium

### Tissue Location

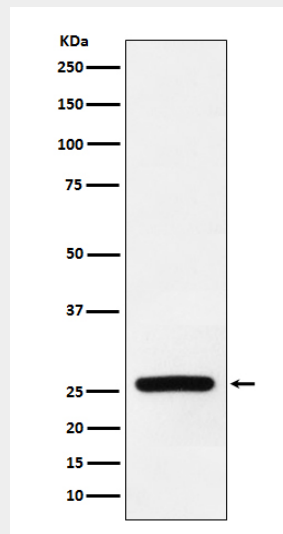
Expressed in blood vessels, heart, lung, kidney and placenta. Major SOD isoenzyme in extracellular fluids such as plasma, lymph and synovial fluid

## Anti-Superoxide Dismutase 3 Rabbit Monoclonal Antibody - Protocols

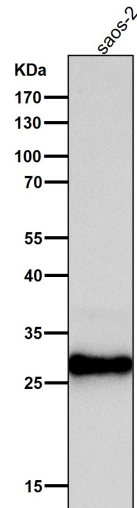
Provided below are standard protocols that you may find useful for product applications.

- [Western Blot](#)
- [Blocking Peptides](#)
- [Dot Blot](#)
- [Immunohistochemistry](#)
- [Immunofluorescence](#)
- [Immunoprecipitation](#)
- [Flow Cytometry](#)
- [Cell Culture](#)

## Anti-Superoxide Dismutase 3 Rabbit Monoclonal Antibody - Images



Western blot analysis of Superoxide Dismutase 3 expression in human fetal heart lysate.



All lanes use the Antibody at 1:1K dilution for 1 hour at room temperature.