

Anti-BCHE Rabbit Monoclonal Antibody
Catalog # ABO15199**Specification**

Anti-BCHE Rabbit Monoclonal Antibody - Product Information

Application	WB
Primary Accession	P06276
Host	Rabbit
Isotype	IgG
Reactivity	Human
Clonality	Monoclonal
Format	Liquid

Description

Anti-BCHE Rabbit Monoclonal Antibody . Tested in WB application. This antibody reacts with Human.

Anti-BCHE Rabbit Monoclonal Antibody - Additional Information

Gene ID 590

Other Names

Cholinesterase, 3.1.1.8, Acylcholine acylhydrolase, Butyrylcholine esterase, Choline esterase II, Pseudocholinesterase, BCHE, CHE1

Application Details

WB 1:500-1:2000

Contents

Rabbit IgG in phosphate buffered saline, pH 7.4, 150mM NaCl, 0.02% sodium azide and 50% glycerol, 0.4-0.5mg/ml BSA.

Immunogen

A synthesized peptide derived from human BCHE

Purification

Affinity-chromatography

Storage

Store at -20°C for one year. For short term storage and frequent use, store at 4°C for up to one month. Avoid repeated freeze-thaw cycles.

Anti-BCHE Rabbit Monoclonal Antibody - Protein Information

Name BCHE

Synonyms CHE1

Function

Esterase with broad substrate specificity. Contributes to the inactivation of the neurotransmitter acetylcholine. Can degrade neurotoxic organophosphate esters.

Cellular Location

Secreted

Tissue Location

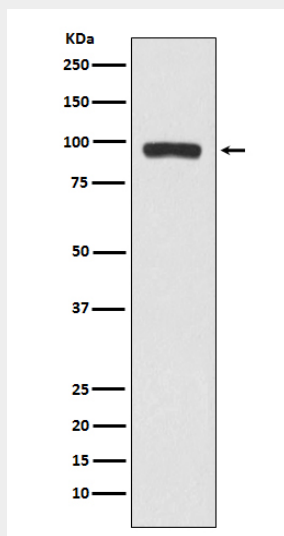
Detected in blood plasma (at protein level). Present in most cells except erythrocytes

Anti-BCHE Rabbit Monoclonal Antibody - Protocols

Provided below are standard protocols that you may find useful for product applications.

- [Western Blot](#)
- [Blocking Peptides](#)
- [Dot Blot](#)
- [Immunohistochemistry](#)
- [Immunofluorescence](#)
- [Immunoprecipitation](#)
- [Flow Cytometry](#)
- [Cell Culture](#)

Anti-BCHE Rabbit Monoclonal Antibody - Images



Western blot analysis of BCHE expression in A375 cell lysate.