

Anti-DOPA Decarboxylase Rabbit Monoclonal Antibody Catalog # ABO15190

Specification

Anti-DOPA Decarboxylase Rabbit Monoclonal Antibody - Product Information

Application	WB
Primary Accession	P20711
Host	Rabbit
Isotype	IgG
Reactivity	Rat, Human, Mouse
Clonality	Monoclonal
Format	Liquid

Description

Anti-DOPA Decarboxylase Rabbit Monoclonal Antibody . Tested in WB application. This antibody reacts with Human, Mouse, Rat.

Anti-DOPA Decarboxylase Rabbit Monoclonal Antibody - Additional Information

Gene ID 1644

Other Names

Aromatic-L-amino-acid decarboxylase, AADC, 4.1.1.28, DOPA decarboxylase, DDC, DDC {ECO:0000303|PubMed:15532536, ECO:0000312|HGNC:HGNC:2719}

Application Details

WB 1:500-1:2000

Contents

Rabbit IgG in phosphate buffered saline, pH 7.4, 150mM NaCl, 0.02% sodium azide and 50% glycerol, 0.4-0.5mg/ml BSA.

Immunogen

A synthesized peptide derived from human DOPA Decarboxylase

Purification

Affinity-chromatography

Storage

Store at -20°C for one year. For short term storage and frequent use, store at 4°C for up to one month. Avoid repeated freeze-thaw cycles.

Anti-DOPA Decarboxylase Rabbit Monoclonal Antibody - Protein Information

Name DDC {ECO:0000303|PubMed:15532536, ECO:0000312|HGNC:HGNC:2719}

Function

Catalyzes the decarboxylation of L-3,4-dihydroxyphenylalanine (DOPA) to dopamine and

L-5-hydroxytryptophan to serotonin.

Tissue Location

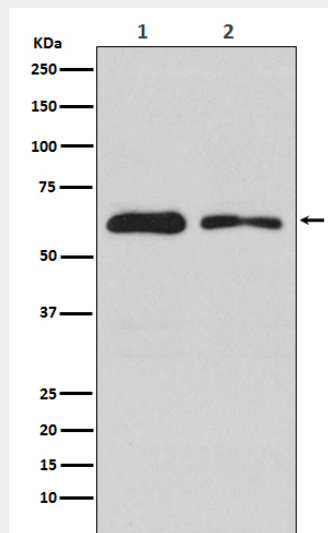
[Isoform 2]: High expression in kidney.

Anti-DOPA Decarboxylase Rabbit Monoclonal Antibody - Protocols

Provided below are standard protocols that you may find useful for product applications.

- [Western Blot](#)
- [Blocking Peptides](#)
- [Dot Blot](#)
- [Immunohistochemistry](#)
- [Immunofluorescence](#)
- [Immunoprecipitation](#)
- [Flow Cytometry](#)
- [Cell Culture](#)

Anti-DOPA Decarboxylase Rabbit Monoclonal Antibody - Images



Western blot analysis of DOPA Decarboxylase expression in (1) 293T cell lysate; (2) RAW 264.7 cell lysate.