

## Anti-Calpain 2 Rabbit Monoclonal Antibody Catalog # ABO15186

### Specification

---

#### Anti-Calpain 2 Rabbit Monoclonal Antibody - Product Information

Application	WB
Primary Accession	<a href="#">P17655</a>
Host	Rabbit
Isotype	IgG
Reactivity	Rat, Human, Mouse
Clonality	Monoclonal
Format	Liquid

#### Description

Anti-Calpain 2 Rabbit Monoclonal Antibody . Tested in WB application. This antibody reacts with Human, Mouse, Rat.

#### Anti-Calpain 2 Rabbit Monoclonal Antibody - Additional Information

Gene ID 824

#### Other Names

Calpain-2 catalytic subunit, 3.4.22.53, Calcium-activated neutral proteinase 2, CANP 2, Calpain M-type, Calpain large polypeptide L2, Calpain-2 large subunit, Millimolar-calpain, M-calpain, CAPN2, CANPL2

#### Application Details

WB 1:500-1:2000

#### Contents

Rabbit IgG in phosphate buffered saline, pH 7.4, 150mM NaCl, 0.02% sodium azide and 50% glycerol, 0.4-0.5mg/ml BSA.

#### Immunogen

A synthesized peptide derived from human Calpain 2

#### Purification

Affinity-chromatography

#### Storage

**Store at -20°C for one year. For short term storage and frequent use, store at 4°C for up to one month. Avoid repeated freeze-thaw cycles.**

#### Anti-Calpain 2 Rabbit Monoclonal Antibody - Protein Information

Name CAPN2

Synonyms CANPL2

**Function**

Calcium-regulated non-lysosomal thiol-protease which catalyzes limited proteolysis of substrates involved in cytoskeletal remodeling and signal transduction. Proteolytically cleaves MYOC at 'Arg-226' (PubMed:<a href="http://www.uniprot.org/citations/17650508" target="\_blank">17650508</a>). Proteolytically cleaves CPEB3 following neuronal stimulation which abolishes CPEB3 translational repressor activity, leading to translation of CPEB3 target mRNAs (By similarity).

**Cellular Location**

Cytoplasm. Cell membrane. Note=Translocates to the plasma membrane upon Ca(2+) binding

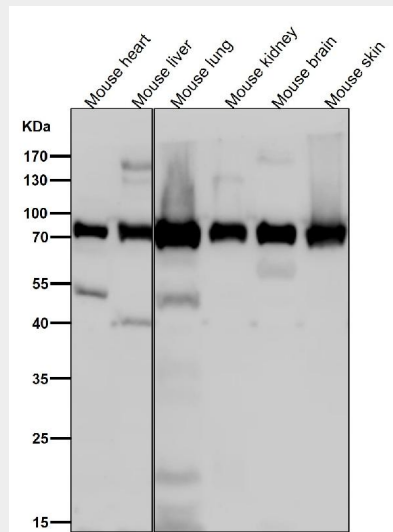
**Tissue Location**

Ubiquitous.

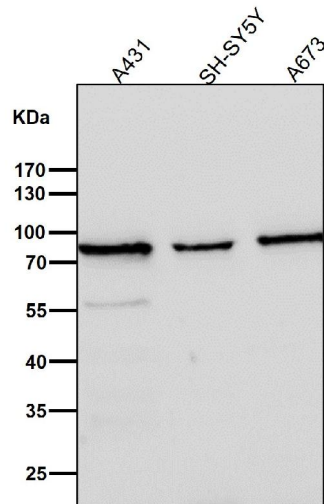
**Anti-Calpain 2 Rabbit Monoclonal Antibody - Protocols**

Provided below are standard protocols that you may find useful for product applications.

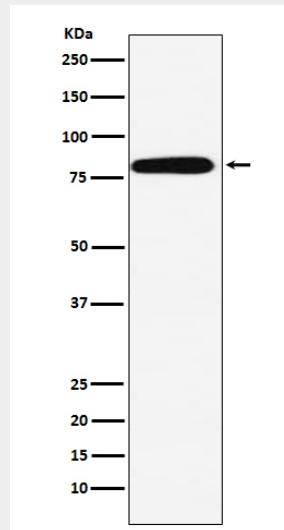
- [Western Blot](#)
- [Blocking Peptides](#)
- [Dot Blot](#)
- [Immunohistochemistry](#)
- [Immunofluorescence](#)
- [Immunoprecipitation](#)
- [Flow Cytometry](#)
- [Cell Culture](#)

**Anti-Calpain 2 Rabbit Monoclonal Antibody - Images**

All lanes use the Antibody at 1:1W dilution for 1 hour at room temperature.



All lanes use the Antibody at 1:1W dilution for 1 hour at room temperature.



Western blot analysis of Calpain 2 expression in A431 cell lysate.