

**Anti-CD42b Rabbit Monoclonal Antibody**  
Catalog # ABO15184**Specification****Anti-CD42b Rabbit Monoclonal Antibody - Product Information**

Application	WB, IHC
Primary Accession	<a href="#">P07359</a>
Host	Rabbit
Isotype	IgG
Reactivity	Human
Clonality	Monoclonal
Format	Liquid

**Description**

Anti-CD42b Rabbit Monoclonal Antibody . Tested in WB, IHC applications. This antibody reacts with Human.

**Anti-CD42b Rabbit Monoclonal Antibody - Additional Information**

**Gene ID** 2811

**Other Names**

Platelet glycoprotein Ib alpha chain, GP-Ib alpha, GPIb-alpha, GPIbA, Glycoprotein Ibalpha, Antigen CD42b-alpha, CD42b, Glycocalicin, GP1BA

**Application Details**

WB 1:1000-1:5000<br>IHC 1:50-1:200

**Contents**

Rabbit IgG in phosphate buffered saline, pH 7.4, 150mM NaCl, 0.02% sodium azide and 50% glycerol, 0.4-0.5mg/ml BSA.

**Immunogen**

A synthesized peptide derived from human CD42b

**Purification**

Affinity-chromatography

**Storage**

**Store at -20°C for one year. For short term storage and frequent use, store at 4°C for up to one month. Avoid repeated freeze-thaw cycles.**

**Anti-CD42b Rabbit Monoclonal Antibody - Protein Information**

**Name** GP1BA

**Function**

GP-Ib, a surface membrane protein of platelets, participates in the formation of platelet plugs by

binding to the A1 domain of vWF, which is already bound to the subendothelium.

#### Cellular Location

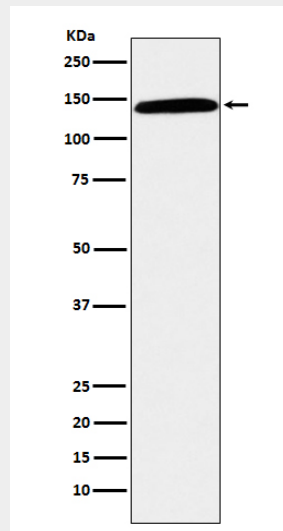
Membrane; Single-pass type I membrane protein.

#### Anti-CD42b Rabbit Monoclonal Antibody - Protocols

Provided below are standard protocols that you may find useful for product applications.

- [Western Blot](#)
- [Blocking Peptides](#)
- [Dot Blot](#)
- [Immunohistochemistry](#)
- [Immunofluorescence](#)
- [Immunoprecipitation](#)
- [Flow Cytometry](#)
- [Cell Culture](#)

#### Anti-CD42b Rabbit Monoclonal Antibody - Images



Western blot analysis of CD42b expression in human spleen lysate.