

Anti-BNP Rabbit Monoclonal Antibody
Catalog # ABO15166**Specification**

Anti-BNP Rabbit Monoclonal Antibody - Product Information

Application	WB
Primary Accession	P16860
Host	Rabbit
Isotype	IgG
Reactivity	Human
Clonality	Monoclonal
Format	Liquid

Description

Anti-BNP Rabbit Monoclonal Antibody . Tested in WB application. This antibody reacts with Human.

Anti-BNP Rabbit Monoclonal Antibody - Additional Information

Gene ID 4879

Other Names

Natriuretic peptides B, Brain natriuretic factor prohormone, preproBNP, BNP(4-32), BNP(4-31), BNP(4-30), BNP(4-29), BNP(4-27), BNP(5-32), BNP(5-31), BNP(5-29), NPPB

Application Details

WB 1:1000-1:5000

Contents

Rabbit IgG in phosphate buffered saline, pH 7.4, 150mM NaCl, 0.02% sodium azide and 50% glycerol, 0.4-0.5mg/ml BSA.

Immunogen

A synthesized peptide derived from human BNP

Purification

Affinity-chromatography

Storage

Store at -20°C for one year. For short term storage and frequent use, store at 4°C for up to one month. Avoid repeated freeze-thaw cycles.

Anti-BNP Rabbit Monoclonal Antibody - Protein Information

Name NPPB

Function

[Brain natriuretic peptide 32]: Cardiac hormone that plays a key role in mediating cardio-renal homeostasis (PubMed:

target="_blank">1672777, PubMed:17372040, PubMed:1914098, PubMed:9458824). May also function as a paracrine antifibrotic factor in the heart (By similarity). Acts by specifically binding and stimulating NPR1 to produce cGMP, which in turn activates effector proteins that drive various biological responses (PubMed:1672777, PubMed:17349887, PubMed:17372040, PubMed:21098034, PubMed:25339504, PubMed:9458824). Involved in regulating the extracellular fluid volume and maintaining the fluid- electrolyte balance through natriuresis, diuresis, vasorelaxation, and inhibition of renin and aldosterone secretion (PubMed:1914098, PubMed:9458824). Binds the clearance receptor NPR3 (PubMed:16870210).

Cellular Location

[NT-proBNP]: Secreted Note=Detected in blood. [Brain natriuretic peptide 32]: Secreted. Note=Detected in blood.

Tissue Location

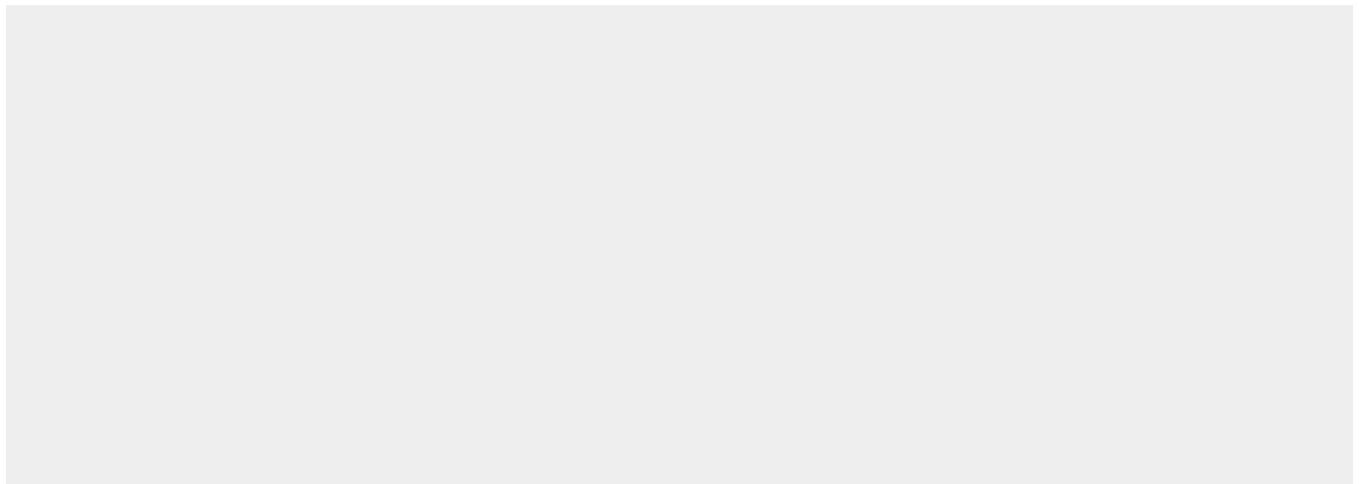
[Brain natriuretic peptide 32]: Detected in the cardiac atria (at protein level) (PubMed:2136732, PubMed:2138890) Detected in the kidney distal tubular cells (at protein level) (PubMed:9794555).

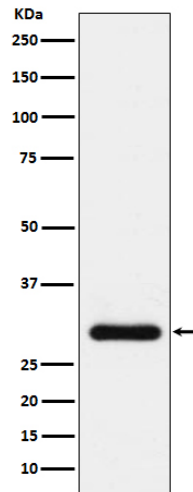
Anti-BNP Rabbit Monoclonal Antibody - Protocols

Provided below are standard protocols that you may find useful for product applications.

- [Western Blot](#)
- [Blocking Peptides](#)
- [Dot Blot](#)
- [Immunohistochemistry](#)
- [Immunofluorescence](#)
- [Immunoprecipitation](#)
- [Flow Cytometry](#)
- [Cell Culture](#)

Anti-BNP Rabbit Monoclonal Antibody - Images





Western blot analysis of BNP expression in human plasma lysate.