

Anti-Alpha Fodrin Rabbit Monoclonal Antibody Catalog # ABO15165

Specification

Anti-Alpha Fodrin Rabbit Monoclonal Antibody - Product Information

Application	WB, IHC, IP
Primary Accession	Q13813
Host	Rabbit
Isotype	IgG
Reactivity	Rat, Human, Mouse
Clonality	Monoclonal
Format	Liquid

Description

Anti-Alpha Fodrin Rabbit Monoclonal Antibody . Tested in WB, IHC, IP applications. This antibody reacts with Human, Mouse, Rat.

Anti-Alpha Fodrin Rabbit Monoclonal Antibody - Additional Information

Gene ID 6709

Other Names

Spectrin alpha chain, non-erythrocytic 1, Alpha-II spectrin, Fodrin alpha chain, Spectrin, non-erythroid alpha subunit, SPTAN1, NEAS, SPTA2

Application Details

WB 1:1000-1:5000
IHC 1:50-1:200
IP 1:10

Contents

Rabbit IgG in phosphate buffered saline, pH 7.4, 150mM NaCl, 0.02% sodium azide and 50% glycerol, 0.4-0.5mg/ml BSA.

Immunogen

A synthesized peptide derived from human Alpha Fodrin

Purification

Affinity-chromatography

Storage

Store at -20°C for one year. For short term storage and frequent use, store at 4°C for up to one month. Avoid repeated freeze-thaw cycles.

Anti-Alpha Fodrin Rabbit Monoclonal Antibody - Protein Information

Name SPTAN1

Synonyms NEAS, SPTA2

Function

Fodrin, which seems to be involved in secretion, interacts with calmodulin in a calcium-dependent manner and is thus candidate for the calcium-dependent movement of the cytoskeleton at the membrane.

Cellular Location

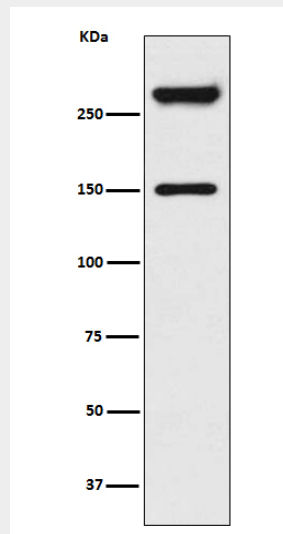
Cytoplasm, cytoskeleton. Cytoplasm, cell cortex. Note=Expressed along the cell membrane in podocytes and presumptive tubule cells during glomerulogenesis and is expressed along lateral cell margins in tubule cells.

Anti-Alpha Fodrin Rabbit Monoclonal Antibody - Protocols

Provided below are standard protocols that you may find useful for product applications.

- [Western Blot](#)
- [Blocking Peptides](#)
- [Dot Blot](#)
- [Immunohistochemistry](#)
- [Immunofluorescence](#)
- [Immunoprecipitation](#)
- [Flow Cytometry](#)
- [Cell Culture](#)

Anti-Alpha Fodrin Rabbit Monoclonal Antibody - Images



Western blot analysis of Alpha Fodrin expression in HeLa cell lysate treated with Camptothecin.