

Anti-ACVRL1 Rabbit Monoclonal Antibody
Catalog # ABO15161**Specification****Anti-ACVRL1 Rabbit Monoclonal Antibody - Product Information**

| | |
|-------------------|------------------------|
| Application | WB |
| Primary Accession | P37023 |
| Host | Rabbit |
| Isotype | IgG |
| Reactivity | Rat, Human, Mouse |
| Clonality | Monoclonal |
| Format | Liquid |

Description

Anti-ACVRL1 Rabbit Monoclonal Antibody . Tested in WB application. This antibody reacts with Human, Mouse, Rat.

Anti-ACVRL1 Rabbit Monoclonal Antibody - Additional Information

Gene ID 94

Other Names

Serine/threonine-protein kinase receptor R3, SKR3, 2.7.11.30, Activin receptor-like kinase 1, ALK-1, TGF-B superfamily receptor type I, TSR-I, ACVRL1, ACVRLK1, ALK1

Application Details

WB 1:500-1:2000

Contents

Rabbit IgG in phosphate buffered saline, pH 7.4, 150mM NaCl, 0.02% sodium azide and 50% glycerol, 0.4-0.5mg/ml BSA.

Immunogen

A synthesized peptide derived from human ACVRL1

Purification

Affinity-chromatography

Storage

Store at -20°C for one year. For short term storage and frequent use, store at 4°C for up to one month. Avoid repeated freeze-thaw cycles.

Anti-ACVRL1 Rabbit Monoclonal Antibody - Protein Information

Name ACVRL1

Synonyms ACVRLK1, ALK1

Function

Type I receptor for TGF-beta family ligands BMP9/GDF2 and BMP10 and important regulator of normal blood vessel development. On ligand binding, forms a receptor complex consisting of two type II and two type I transmembrane serine/threonine kinases. Type II receptors phosphorylate and activate type I receptors which autophosphorylate, then bind and activate SMAD transcriptional regulators. May bind activin as well.

Cellular Location

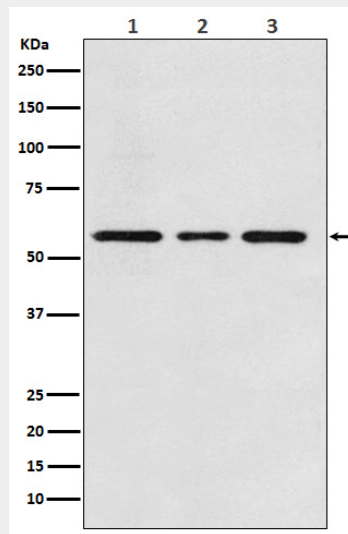
Cell membrane; Single-pass type I membrane protein

Anti-ACVRL1 Rabbit Monoclonal Antibody - Protocols

Provided below are standard protocols that you may find useful for product applications.

- [Western Blot](#)
- [Blocking Peptides](#)
- [Dot Blot](#)
- [Immunohistochemistry](#)
- [Immunofluorescence](#)
- [Immunoprecipitation](#)
- [Flow Cytometry](#)
- [Cell Culture](#)

Anti-ACVRL1 Rabbit Monoclonal Antibody - Images



Western blot analysis of ACVRL1 expression in (1) Jurkat cell lysate; (2) Mouse kidney lysate; (3) Rat kidney lysate.