

**Anti-TGF beta 1 Rabbit Monoclonal Antibody**  
Catalog # ABO15154**Specification****Anti-TGF beta 1 Rabbit Monoclonal Antibody - Product Information**

Application	WB
Primary Accession	<a href="#">P01137</a>
Host	Rabbit
Isotype	IgG
Reactivity	Human
Clonality	Monoclonal
Format	Liquid

**Description**

Anti-TGF beta 1 Rabbit Monoclonal Antibody . Tested in WB application. This antibody reacts with Human.

**Anti-TGF beta 1 Rabbit Monoclonal Antibody - Additional Information**

**Gene ID** 7040

**Other Names**

Transforming growth factor beta-1 proprotein, Latency-associated peptide, LAP, Transforming growth factor beta-1, TGF-beta-1, TGFB1 ([HGNC:11766](http://www.genenames.org/cgi-bin/gene_symbol_report?hgnc_id=11766)), TGFB

**Application Details**

WB 1:500-1:2000

**Contents**

Rabbit IgG in phosphate buffered saline, pH 7.4, 150mM NaCl, 0.02% sodium azide and 50% glycerol, 0.4-0.5mg/ml BSA.

**Immunogen**

A synthesized peptide derived from human TGF beta 1

**Purification**

Affinity-chromatography

Storage

**Store at -20°C for one year. For short term storage and frequent use, store at 4°C for up to one month. Avoid repeated freeze-thaw cycles.**

**Anti-TGF beta 1 Rabbit Monoclonal Antibody - Protein Information**

**Name** TGFB1 ([HGNC:11766](#))

## Synonyms TGFB

### Function

Transforming growth factor beta-1 proprotein: Precursor of the Latency-associated peptide (LAP) and Transforming growth factor beta-1 (TGF-beta-1) chains, which constitute the regulatory and active subunit of TGF-beta-1, respectively.

### Cellular Location

[Latency-associated peptide]: Secreted, extracellular space, extracellular matrix

### Tissue Location

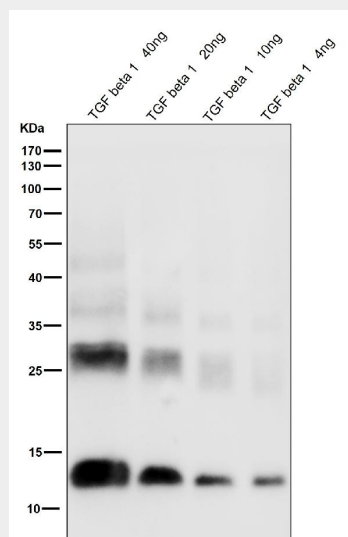
Highly expressed in bone (PubMed:11746498, PubMed:17827158). Abundantly expressed in articular cartilage and chondrocytes and is increased in osteoarthritis (OA) (PubMed:11746498, PubMed:17827158). Colocalizes with ASPN in chondrocytes within OA lesions of articular cartilage (PubMed:17827158)

## Anti-TGF beta 1 Rabbit Monoclonal Antibody - Protocols

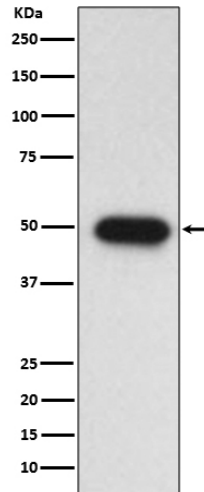
Provided below are standard protocols that you may find useful for product applications.

- [Western Blot](#)
- [Blocking Peptides](#)
- [Dot Blot](#)
- [Immunohistochemistry](#)
- [Immunofluorescence](#)
- [Immunoprecipitation](#)
- [Flow Cytometry](#)
- [Cell Culture](#)

## Anti-TGF beta 1 Rabbit Monoclonal Antibody - Images



All lanes use the Antibody at 1:1W dilution for 1 hour at room temperature.



Western blot analysis of TGF beta 1 expression in A549 lysate.