

**Anti-p57 Kip2 Rabbit Monoclonal Antibody**  
Catalog # ABO15144**Specification****Anti-p57 Kip2 Rabbit Monoclonal Antibody - Product Information**

Application	WB, IHC, IF, ICC, IP
Primary Accession	<a href="#">P49918</a>
Host	Rabbit
Isotype	IgG
Reactivity	Rat, Human, Mouse
Clonality	Monoclonal
Format	Liquid

**Description**

Anti-p57 Kip2 Rabbit Monoclonal Antibody . Tested in WB, IHC, ICC/IF, IP applications. This antibody reacts with Human, Mouse, Rat.

**Anti-p57 Kip2 Rabbit Monoclonal Antibody - Additional Information**

**Gene ID** 1028

**Other Names**

Cyclin-dependent kinase inhibitor 1C, Cyclin-dependent kinase inhibitor p57, p57Kip2, CDKN1C, KIP2

**Application Details**

WB 1:500-1:2000<br>IHC 1:50-1:200<br>ICC/IF 1:50-1:200<br>IP 1:50

**Contents**

Rabbit IgG in phosphate buffered saline, pH 7.4, 150mM NaCl, 0.02% sodium azide and 50% glycerol, 0.4-0.5mg/ml BSA.

**Immunogen**

A synthesized peptide derived from human p57 Kip2

**Purification**

Affinity-chromatography

**Storage**

**Store at -20°C for one year. For short term storage and frequent use, store at 4°C for up to one month. Avoid repeated freeze-thaw cycles.**

**Anti-p57 Kip2 Rabbit Monoclonal Antibody - Protein Information**

**Name** CDKN1C

**Synonyms** KIP2

### Function

Potent tight-binding inhibitor of several G1 cyclin/CDK complexes (cyclin E-CDK2, cyclin D2-CDK4, and cyclin A-CDK2) and, to lesser extent, of the mitotic cyclin B-CDC2. Negative regulator of cell proliferation. May play a role in maintenance of the non-proliferative state throughout life.

### Cellular Location

Nucleus.

### Tissue Location

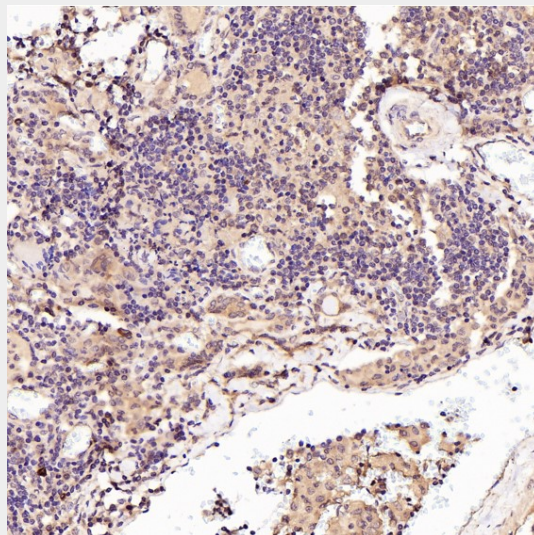
Expressed in the heart, brain, lung, skeletal muscle, kidney, pancreas and testis. Expressed in the eye. High levels are seen in the placenta while low levels are seen in the liver

## Anti-p57 Kip2 Rabbit Monoclonal Antibody - Protocols

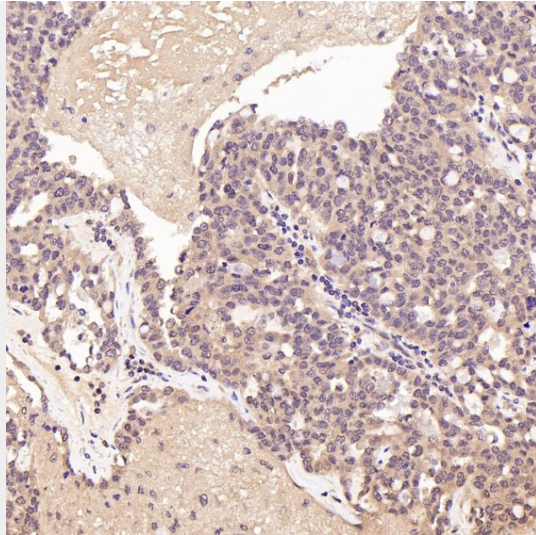
Provided below are standard protocols that you may find useful for product applications.

- [Western Blot](#)
- [Blocking Peptides](#)
- [Dot Blot](#)
- [Immunohistochemistry](#)
- [Immunofluorescence](#)
- [Immunoprecipitation](#)
- [Flow Cytometry](#)
- [Cell Culture](#)

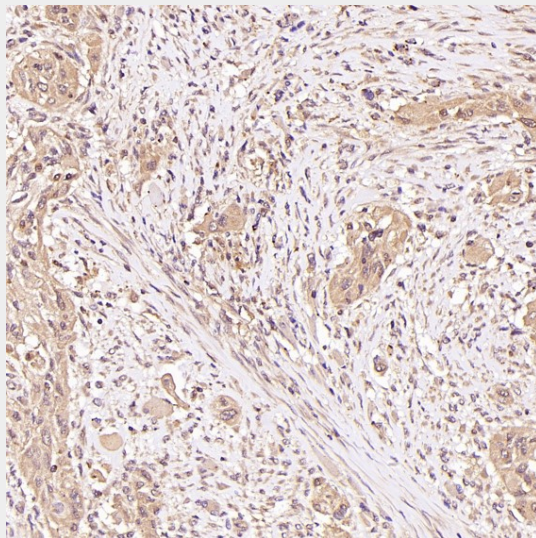
## Anti-p57 Kip2 Rabbit Monoclonal Antibody - Images



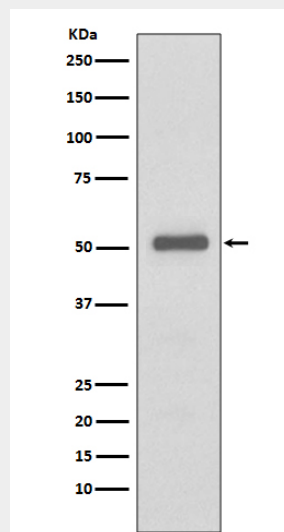
Immunohistochemical analysis of paraffin-embedded Human thyroid cancer, using the Antibody at 1:50 dilution.



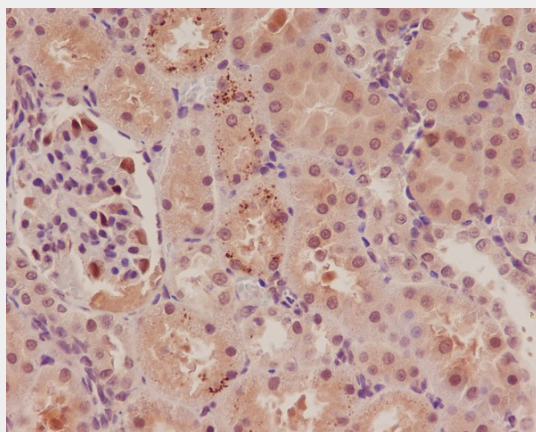
Immunohistochemical analysis of paraffin-embedded Human ovarian cancer, using the Antibody at 1:50 dilution.



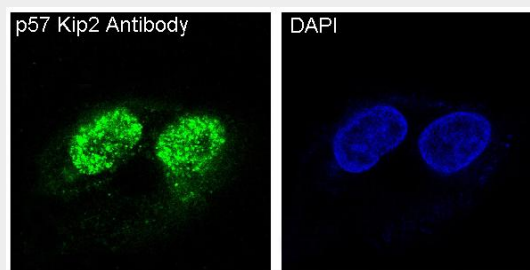
Immunohistochemical analysis of paraffin-embedded Human tongue cancer, using the Antibody at 1:50 dilution.



Western blot analysis on HeLa cell using p57 Kip2 Antibody.



Immunohistochemical analysis of paraffin-embedded rat kidney, using p57 Kip2 Antibody.



Immunofluorescent analysis of HeLa cells treated with dexamethasone, using p57 Kip2 Antibody.