

**Anti-beta Actin Mouse Monoclonal Antibody(HRP Conjugated)**  
Catalog # ABO15137

**Specification**

**Anti-beta Actin Mouse Monoclonal Antibody(HRP Conjugated) - Product Information**

Application	WB
Primary Accession	<a href="#">P60709</a>
Host	Mouse
Isotype	IgG2b
Reactivity	Rat, Human, Mouse
Clonality	Monoclonal
Format	Liquid

**Description**

Anti-beta Actin Mouse Monoclonal Antibody(HRP Conjugated) . Tested in WB application. This antibody reacts with Human, Mouse, Rat.

**Anti-beta Actin Mouse Monoclonal Antibody(HRP Conjugated) - Additional Information**

**Gene ID** 60

**Other Names**

Actin, cytoplasmic 1, 3.6.4.-, Beta-actin, Actin, cytoplasmic 1, N-terminally processed, ACTB

**Application Details**

WB 1:3000-1:10000

**Contents**

Rabbit IgG in phosphate buffered saline, pH 7.4, 150mM NaCl, 0.02% sodium azide and 50% glycerol, 0.4-0.5mg/ml BSA.

**Immunogen**

A synthesized peptide derived from human beta Actin

**Purification**

Affinity-chromatography

**Storage**

**Store at -20°C for one year. For short term storage and frequent use, store at 4°C for up to one month. Avoid repeated freeze-thaw cycles.**

**Anti-beta Actin Mouse Monoclonal Antibody(HRP Conjugated) - Protein Information**

**Name** ACTB

**Function**

Actin is a highly conserved protein that polymerizes to produce filaments that form cross-linked networks in the cytoplasm of cells (PubMed: <http://www.uniprot.org/citations/25255767>)

target="\_blank">25255767</a>, PubMed:<a href="http://www.uniprot.org/citations/29581253" target="\_blank">29581253</a>). Actin exists in both monomeric (G-actin) and polymeric (F-actin) forms, both forms playing key functions, such as cell motility and contraction (PubMed:<a href="http://www.uniprot.org/citations/29581253" target="\_blank">29581253</a>). In addition to their role in the cytoplasmic cytoskeleton, G- and F- actin also localize in the nucleus, and regulate gene transcription and motility and repair of damaged DNA (PubMed:<a href="http://www.uniprot.org/citations/29925947" target="\_blank">29925947</a>). Part of the ACTR1A/ACTB filament around which the dynactin complex is built. The dynactin multiprotein complex activates the molecular motor dynein for ultra-processive transport along microtubules (By similarity).

### Cellular Location

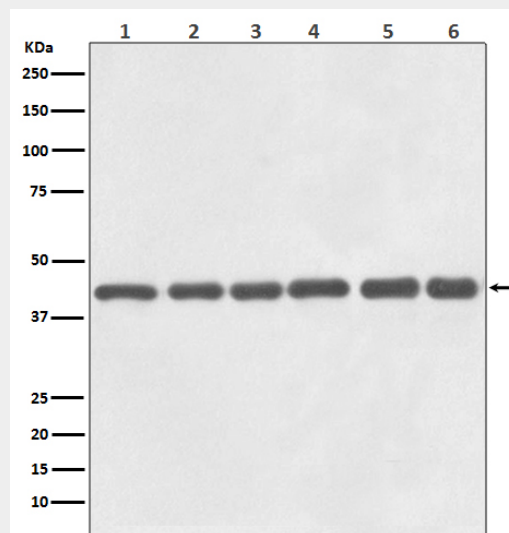
Cytoplasm, cytoskeleton. Nucleus Note=Localized in cytoplasmic mRNP granules containing untranslated mRNAs.

### Anti-beta Actin Mouse Monoclonal Antibody(HRP Conjugated) - Protocols

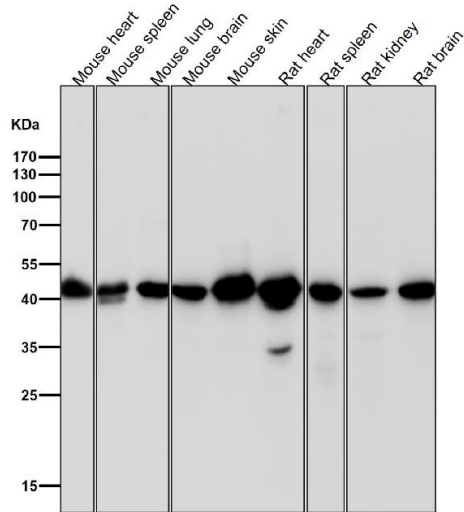
Provided below are standard protocols that you may find useful for product applications.

- [Western Blot](#)
- [Blocking Peptides](#)
- [Dot Blot](#)
- [Immunohistochemistry](#)
- [Immunofluorescence](#)
- [Immunoprecipitation](#)
- [Flow Cytometry](#)
- [Cell Culture](#)

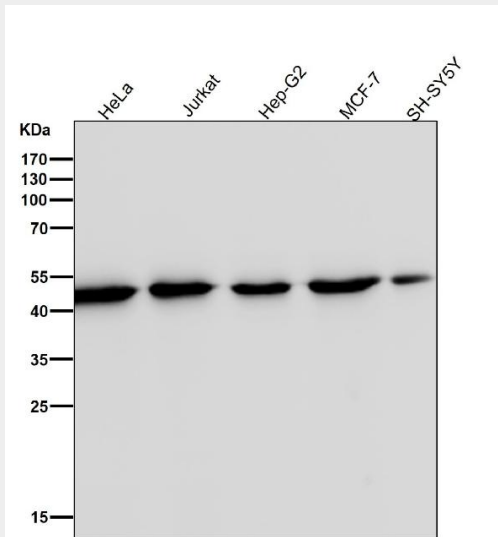
### Anti-beta Actin Mouse Monoclonal Antibody(HRP Conjugated) - Images



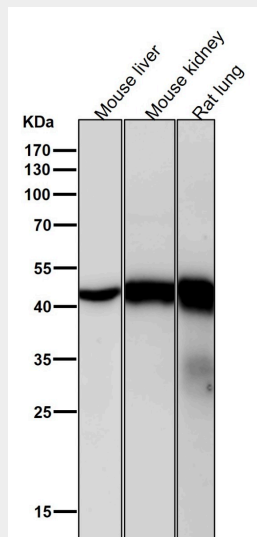
Western blot analysis of beta Actin expression in (1) HeLa cell lysate, (2) Human liver lysate, (3) 3T3 cell lysate, (4) Mouse brain lysate, (5) PC12 cell lysate, (6) Rat heart lysate.



All lanes use the Antibody at 1:1W dilution for 1 hour at room temperature.



All lanes use the Antibody at 1:1W dilution for 1 hour at room temperature.



All lanes use the Antibody at 1:1W dilution for 1 hour at room temperature.