

Anti-CCR8 Rabbit Monoclonal Antibody
Catalog # ABO14961**Specification****Anti-CCR8 Rabbit Monoclonal Antibody - Product Information**

Application	WB, IF, ICC
Primary Accession	P51685
Host	Rabbit
Isotype	Rabbit IgG
Reactivity	Rat, Human, Mouse
Clonality	Monoclonal
Format	Liquid

Description

Anti-CCR8 Rabbit Monoclonal Antibody . Tested in WB, ICC/IF applications. This antibody reacts with Human, Mouse, Rat.

Anti-CCR8 Rabbit Monoclonal Antibody - Additional Information

Gene ID 1237

Other Names

C-C chemokine receptor type 8, C-C CKR-8, CC-CKR-8, CCR-8, CC chemokine receptor CHEMR1, CMKBRL2, Chemokine receptor-like 1, CKR-L1, GPR-CY6, GPRCY6, TER1, CDw198, CCR8, CKRL1, CMKBR8, CMKBRL2

Application Details

WB 1:500-1:1000
ICC/IF 1:50-1:200

Contents

Rabbit IgG in phosphate buffered saline, pH 7.4, 150mM NaCl, 0.02% sodium azide and 50% glycerol, 0.4-0.5mg/ml BSA.

Immunogen

A synthesized peptide derived from human CCR8

Purification

Affinity-chromatography

Storage

Store at -20°C for one year. For short term storage and frequent use, store at 4°C for up to one month. Avoid repeated freeze-thaw cycles.

Anti-CCR8 Rabbit Monoclonal Antibody - Protein Information

Name CCR8

Synonyms CKRL1, CMKBR8, CMKBRL2

Function

Receptor for the chemokine CCL1/SCYA1/I-309. May regulate monocyte chemotaxis and thymic cell line apoptosis. Alternative coreceptor with CD4 for HIV-1 infection.

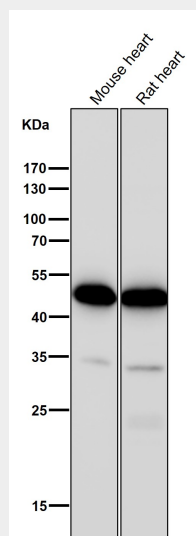
Cellular Location

Cell membrane; Multi-pass membrane protein.

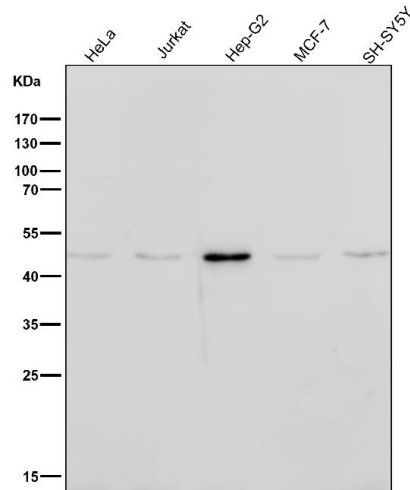
Anti-CCR8 Rabbit Monoclonal Antibody - Protocols

Provided below are standard protocols that you may find useful for product applications.

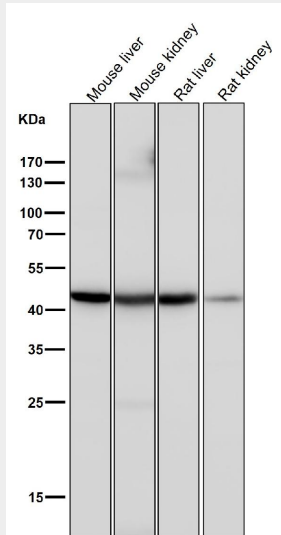
- [Western Blot](#)
- [Blocking Peptides](#)
- [Dot Blot](#)
- [Immunohistochemistry](#)
- [Immunofluorescence](#)
- [Immunoprecipitation](#)
- [Flow Cytometry](#)
- [Cell Culture](#)

Anti-CCR8 Rabbit Monoclonal Antibody - Images

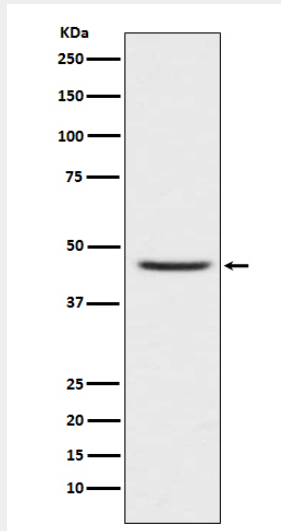
All lanes use the Antibody at 1:1K dilution for 1 hour at room temperature.



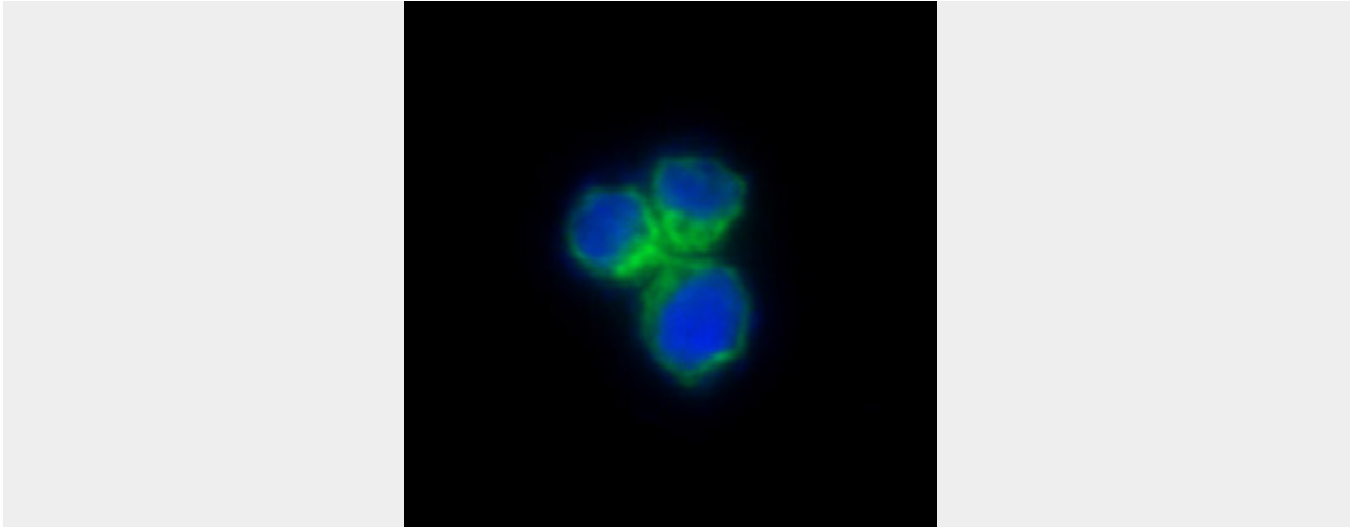
All lanes use the Antibody at 1:1K dilution for 1 hour at room temperature.



All lanes use the Antibody at 1:1K dilution for 1 hour at room temperature.



Western blot analysis of CCR8 expression in Jurkat cell lysate.



Immunofluorescent analysis of HeLa cells, using CCR8 Antibody.