

**Anti-CRX Monoclonal Antibody**  
Catalog # ABO14776**Specification****Anti-CRX Monoclonal Antibody - Product Information**

Application	WB, IHC
Primary Accession	<a href="#">O43186</a>
Host	Rabbit
Isotype	Rabbit IgG
Reactivity	Human
Clonality	Monoclonal
Format	Liquid

**Description**

Anti-CRX Monoclonal Antibody . Tested in WB, IHC applications. This antibody reacts with Human.

**Anti-CRX Monoclonal Antibody - Additional Information**

**Gene ID** 1406

**Other Names**

Cone-rod homeobox protein, CRX, CORD2

**Application Details**

WB 1:500-1:2000<br>IHC 1:50-1:200

**Contents**

Rabbit IgG in phosphate buffered saline, pH 7.4, 150mM NaCl, 0.02% sodium azide and 50% glycerol, 0.4-0.5mg/ml BSA.

**Immunogen**

A synthesized peptide derived from human CRX Binds and transactivates the sequence 5'-TAATC[CA]-3' which is found upstream of several photoreceptor-specific genes, including the opsin genes. Acts synergistically with other transcription factors, e.g. NRL and RX, to regulate photoreceptor cell-specific gene transcription. Essential for the maintenance of mammalian photoreceptors.

**Purification**

Affinity-chromatography

Storage

**Store at -20°C for one year. For short term storage and frequent use, store at 4°C for up to one month. Avoid repeated freeze-thaw cycles.**

**Anti-CRX Monoclonal Antibody - Protein Information**

**Name** CRX

## Synonyms **CORD2**

### Function

Transcription factor that binds and transactivates the sequence 5'-TAATC[CA]-3' which is found upstream of several photoreceptor-specific genes, including the opsin genes. Acts synergistically with other transcription factors, such as NRL, RORB and RAX, to regulate photoreceptor cell-specific gene transcription. Essential for the maintenance of mammalian photoreceptors.

### Cellular Location

Nucleus {ECO:0000255|PROSITE-ProRule:PRU00108}.

### Tissue Location

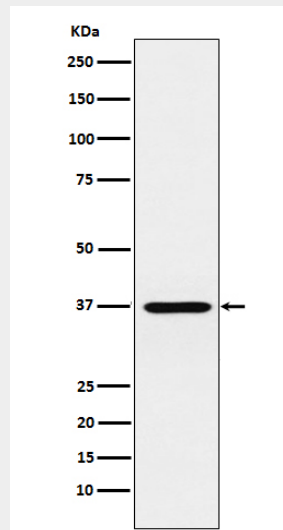
Retina.

## Anti-CRX Monoclonal Antibody - Protocols

Provided below are standard protocols that you may find useful for product applications.

- [Western Blot](#)
- [Blocking Peptides](#)
- [Dot Blot](#)
- [Immunohistochemistry](#)
- [Immunofluorescence](#)
- [Immunoprecipitation](#)
- [Flow Cytometry](#)
- [Cell Culture](#)

## Anti-CRX Monoclonal Antibody - Images



Western blot analysis of CRX expression in Y79 cell lysate.