

Anti-PBRM1 Rabbit Monoclonal Antibody
Catalog # ABO14773**Specification****Anti-PBRM1 Rabbit Monoclonal Antibody - Product Information**

Application	WB, IHC, IF, ICC, FC
Primary Accession	Q86U86
Host	Rabbit
Isotype	Rabbit IgG
Reactivity	Rat, Human, Mouse
Clonality	Monoclonal
Format	Liquid

Description

Anti-PBRM1 Rabbit Monoclonal Antibody . Tested in WB, IHC, ICC/IF, Flow Cytometry applications. This antibody reacts with Human, Mouse, Rat.

Anti-PBRM1 Rabbit Monoclonal Antibody - Additional Information

Gene ID 55193

Other Names

Protein polybromo-1, hPB1, BRG1-associated factor 180, BAF180, Polybromo-1D, PBRM1, BAF180, PB1

Application Details

WB 1:500-1:2000
IHC 1:100-1:500
ICC/IF 1:50-1:100
FC 1:50

Contents

Rabbit IgG in phosphate buffered saline, pH 7.4, 150mM NaCl, 0.02% sodium azide and 50% glycerol, 0.4-0.5mg/ml BSA.

Immunogen

A synthesized peptide derived from human PBRM1

Purification

Affinity-chromatography

Storage

Store at -20°C for one year. For short term storage and frequent use, store at 4°C for up to one month. Avoid repeated freeze-thaw cycles.

Anti-PBRM1 Rabbit Monoclonal Antibody - Protein Information

Name PBRM1

Synonyms BAF180, PB1

Function

Involved in transcriptional activation and repression of select genes by chromatin remodeling (alteration of DNA-nucleosome topology). Required for the stability of the SWI/SNF chromatin remodeling complex SWI/SNF-B (PBAF). Acts as a negative regulator of cell proliferation.

Cellular Location

Nucleus

Tissue Location

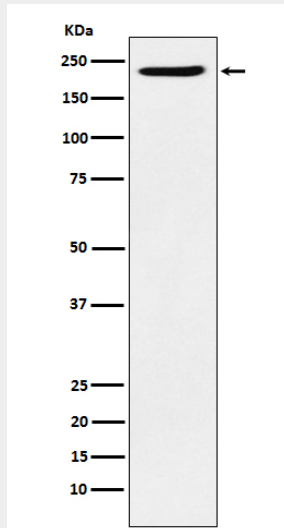
Widely expressed..

Anti-PBRM1 Rabbit Monoclonal Antibody - Protocols

Provided below are standard protocols that you may find useful for product applications.

- [Western Blot](#)
- [Blocking Peptides](#)
- [Dot Blot](#)
- [Immunohistochemistry](#)
- [Immunofluorescence](#)
- [Immunoprecipitation](#)
- [Flow Cytometry](#)
- [Cell Culture](#)

Anti-PBRM1 Rabbit Monoclonal Antibody - Images



Western blot analysis of PBRM1 expression in HeLa cell lysate.