

Anti-FSH beta (FSHB) Monoclonal Antibody
Catalog # ABO14765

Specification

Anti-FSH beta (FSHB) Monoclonal Antibody - Product Information

Application	WB, IP
Primary Accession	P01225
Host	Rabbit
Isotype	Rabbit IgG
Reactivity	Human
Clonality	Monoclonal
Format	Liquid

Description

Anti-FSH beta (FSHB) Monoclonal Antibody . Tested in WB, IP applications. This antibody reacts with Human.

Anti-FSH beta (FSHB) Monoclonal Antibody - Additional Information

Gene ID 2488

Other Names

Follitropin subunit beta, Follicle-stimulating hormone beta subunit, FSH-B, FSH-beta, Follitropin beta chain, FSHB

Application Details

WB 1:500-1:2000
IP 1:50

Contents

Rabbit IgG in phosphate buffered saline, pH 7.4, 150mM NaCl, 0.02% sodium azide and 50% glycerol, 0.4-0.5mg/ml BSA.

Immunogen

A synthesized peptide derived from human FSH beta (FSHB) Follicle stimulating hormone enables ovarian folliculogenesis to the antral follicle stage and is essential for Sertoli cell proliferation and maintenance of sperm quality in the testis.

Purification

Affinity-chromatography

Storage

Store at -20°C for one year. For short term storage and frequent use, store at 4°C for up to one month. Avoid repeated freeze-thaw cycles.

Anti-FSH beta (FSHB) Monoclonal Antibody - Protein Information

Name FSHB

Function

Together with the alpha chain CGA constitutes follitropin, the follicle-stimulating hormone, and provides its biological specificity to the hormone heterodimer. Binds FSHR, a G protein-coupled receptor, on target cells to activate downstream signaling pathways (PubMed:24692546, PubMed:2494176). Follitropin is involved in follicle development and spermatogenesis in reproductive organs (PubMed:407105, PubMed:8220432).

Cellular Location

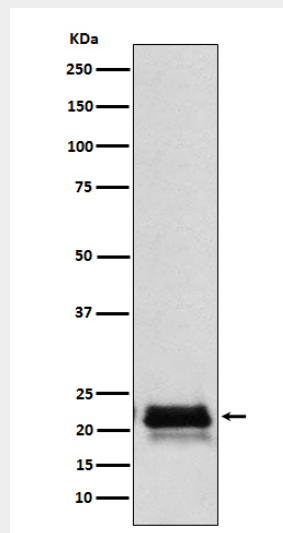
Secreted. Note=Efficient secretion requires dimerization with CGA

Anti-FSH beta (FSHB) Monoclonal Antibody - Protocols

Provided below are standard protocols that you may find useful for product applications.

- [Western Blot](#)
- [Blocking Peptides](#)
- [Dot Blot](#)
- [Immunohistochemistry](#)
- [Immunofluorescence](#)
- [Immunoprecipitation](#)
- [Flow Cytometry](#)
- [Cell Culture](#)

Anti-FSH beta (FSHB) Monoclonal Antibody - Images



Western blot analysis of FSH beta (FSHB) expression in Human pituitary lysate.