

Anti-CD25 IL2RA Monoclonal Antibody
Catalog # ABO14759

Specification

Anti-CD25 IL2RA Monoclonal Antibody - Product Information

Application	IHC, IF, ICC
Primary Accession	P01589
Host	Rabbit
Isotype	Rabbit IgG
Reactivity	Human
Clonality	Monoclonal
Format	Liquid

Description

Anti-CD25 IL2RA Monoclonal Antibody . Tested in IHC, ICC/IF applications. This antibody reacts with Human.

Anti-CD25 IL2RA Monoclonal Antibody - Additional Information

Gene ID 3559

Other Names

Interleukin-2 receptor subunit alpha, IL-2 receptor subunit alpha, IL-2-RA, IL-2R subunit alpha, IL2-RA, TAC antigen, p55, CD25, IL2RA

Application Details

IHC 1:50-1:200
ICC/IF 1:50-1:200

Contents

Rabbit IgG in phosphate buffered saline, pH 7.4, 150mM NaCl, 0.02% sodium azide and 50% glycerol, 0.4-0.5mg/ml BSA.

Immunogen

A synthesized peptide derived from human CD25 Receptor for interleukin-2.

Purification

Affinity-chromatography

Storage

Store at -20°C for one year. For short term storage and frequent use, store at 4°C for up to one month. Avoid repeated freeze-thaw cycles.

Anti-CD25 IL2RA Monoclonal Antibody - Protein Information

Name IL2RA

Function

Receptor for interleukin-2. The receptor is involved in the regulation of immune tolerance by

controlling regulatory T cells (TREGs) activity. TREGs suppress the activation and expansion of autoreactive T-cells.

Cellular Location

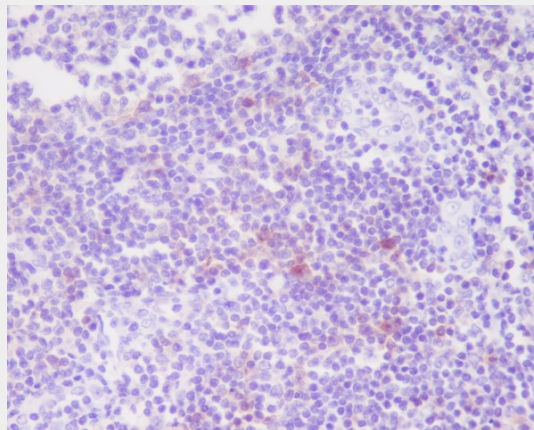
Membrane; Single-pass type I membrane protein.

Anti-CD25 IL2RA Monoclonal Antibody - Protocols

Provided below are standard protocols that you may find useful for product applications.

- [Western Blot](#)
- [Blocking Peptides](#)
- [Dot Blot](#)
- [Immunohistochemistry](#)
- [Immunofluorescence](#)
- [Immunoprecipitation](#)
- [Flow Cytometry](#)
- [Cell Culture](#)

Anti-CD25 IL2RA Monoclonal Antibody - Images



Immunohistochemical analysis of paraffin-embedded human tonsil, using CD25 Antibody.