

Anti-CA125 / MUC16 Monoclonal Antibody
Catalog # ABO14746

Specification

Anti-CA125 / MUC16 Monoclonal Antibody - Product Information

Application	WB, IHC
Primary Accession	Q8WXI7
Host	Rabbit
Isotype	Rabbit IgG
Reactivity	Human
Clonality	Monoclonal
Format	Liquid

Description

Anti-CA125 / MUC16 Monoclonal Antibody . Tested in WB, IHC applications. This antibody reacts with Human.

Anti-CA125 / MUC16 Monoclonal Antibody - Additional Information

Gene ID 94025

Other Names

Mucin-16, MUC-16, Ovarian cancer-related tumor marker CA125, CA-125, Ovarian carcinoma antigen CA125, MUC16 ([HGNC:15582](http://www.genenames.org/cgi-bin/gene_symbol_report?hgnc_id=15582))

Application Details

WB 1:500-1:2000
IHC 1:50-1:200

Contents

Rabbit IgG in phosphate buffered saline, pH 7.4, 150mM NaCl, 0.02% sodium azide and 50% glycerol, 0.4-0.5mg/ml BSA.

Immunogen

A synthesized peptide derived from human CA-125 (MUC16) Thought to provide a protective, lubricating barrier against particles and infectious agents at mucosal surfaces.

Purification

Affinity-chromatography

Storage

Store at -20°C for one year. For short term storage and frequent use, store at 4°C for up to one month. Avoid repeated freeze-thaw cycles.

Anti-CA125 / MUC16 Monoclonal Antibody - Protein Information

Name MUC16 ([HGNC:15582](#))

Function

Thought to provide a protective, lubricating barrier against particles and infectious agents at mucosal surfaces.

Cellular Location

Cell membrane; Single-pass type I membrane protein. Secreted, extracellular space. Note=May be liberated into the extracellular space following the phosphorylation of the intracellular C-terminus which induces the proteolytic cleavage and liberation of the extracellular domain

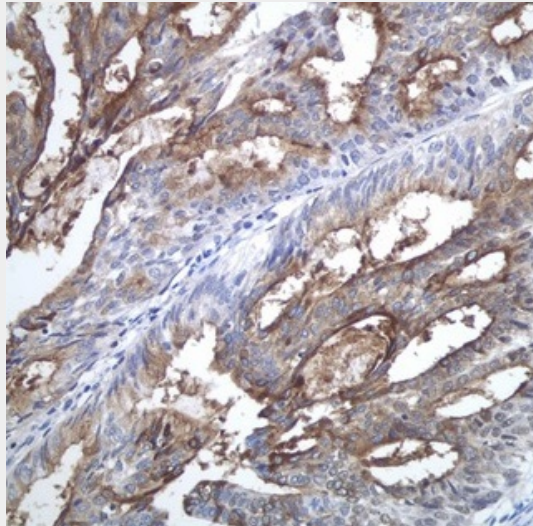
Tissue Location

Expressed in corneal and conjunctival epithelia (at protein level). Overexpressed in ovarian carcinomas and ovarian low malignant potential (LMP) tumors as compared to the expression in normal ovarian tissue and ovarian adenomas

Anti-CA125 / MUC16 Monoclonal Antibody - Protocols

Provided below are standard protocols that you may find useful for product applications.

- [Western Blot](#)
- [Blocking Peptides](#)
- [Dot Blot](#)
- [Immunohistochemistry](#)
- [Immunofluorescence](#)
- [Immunoprecipitation](#)
- [Flow Cytometry](#)
- [Cell Culture](#)

Anti-CA125 / MUC16 Monoclonal Antibody - Images

Immunohistochemical analysis of paraffin-embedded human ovary cancer, using CA-125 (MUC16) Antibody.