

Anti-PEDF Monoclonal Antibody
Catalog # ABO14740

Specification

Anti-PEDF Monoclonal Antibody - Product Information

Application	WB, FC
Primary Accession	P36955
Host	Rabbit
Isotype	Rabbit IgG
Reactivity	Human
Clonality	Monoclonal
Format	Liquid

Description

Anti-PEDF Monoclonal Antibody . Tested in WB, Flow Cytometry applications. This antibody reacts with Human.

Anti-PEDF Monoclonal Antibody - Additional Information

Gene ID 5176

Other Names

Pigment epithelium-derived factor, PEDF, Cell proliferation-inducing gene 35 protein, EPC-1, Serpin F1, SERPINF1, PEDF

Application Details

WB 1:500-1:2000
FC 1:100

Contents

Rabbit IgG in phosphate buffered saline, pH 7.4, 150mM NaCl, 0.02% sodium azide and 50% glycerol, 0.4-0.5mg/ml BSA.

Immunogen

A synthesized peptide derived from human PEDF Neurotrophic protein; induces extensive neuronal differentiation in retinoblastoma cells. Potent inhibitor of angiogenesis. As it does not undergo the S (stressed) to R (relaxed) conformational transition characteristic of active serpins, it exhibits no serine protease inhibitory activity.

Purification

Affinity-chromatography

Storage

Store at -20°C for one year. For short term storage and frequent use, store at 4°C for up to one month. Avoid repeated freeze-thaw cycles.

Anti-PEDF Monoclonal Antibody - Protein Information

Name SERPINF1

Synonyms PEDF

Function

Neurotrophic protein; induces extensive neuronal differentiation in retinoblastoma cells. Potent inhibitor of angiogenesis. As it does not undergo the S (stressed) to R (relaxed) conformational transition characteristic of active serpins, it exhibits no serine protease inhibitory activity.

Cellular Location

Secreted. Melanosome. Note=Enriched in stage I melanosomes

Tissue Location

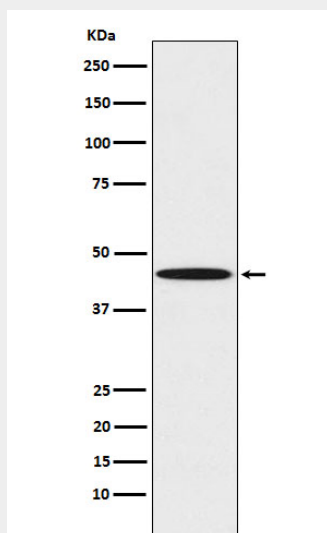
Retinal pigment epithelial cells and blood plasma.

Anti-PEDF Monoclonal Antibody - Protocols

Provided below are standard protocols that you may find useful for product applications.

- [Western Blot](#)
- [Blocking Peptides](#)
- [Dot Blot](#)
- [Immunohistochemistry](#)
- [Immunofluorescence](#)
- [Immunoprecipitation](#)
- [Flow Cytometry](#)
- [Cell Culture](#)

Anti-PEDF Monoclonal Antibody - Images



Western blot analysis of PEDF expression in K562 cell lysate.