

Anti-GLO1 Monoclonal Antibody
Catalog # ABO14735

Specification

Anti-GLO1 Monoclonal Antibody - Product Information

| | |
|-------------------|------------------------|
| Application | WB, FC |
| Primary Accession | Q04760 |
| Host | Rabbit |
| Isotype | Rabbit IgG |
| Reactivity | Rat, Human, Mouse |
| Clonality | Monoclonal |
| Format | Liquid |

Description

Anti-GLO1 Monoclonal Antibody . Tested in WB, Flow Cytometry applications. This antibody reacts with Human, Mouse, Rat.

Anti-GLO1 Monoclonal Antibody - Additional Information

Gene ID 2739

Other Names

Lactoylglutathione lyase, 4.4.1.5, Aldoketomutase, Glyoxalase I, Glx I, Ketone-aldehyde mutase, Methylglyoxalase, S-D-lactoylglutathione methylglyoxal lyase, GLO1

Application Details

WB 1:500-1:2000
FC 1:50

Contents

Rabbit IgG in phosphate buffered saline, pH 7.4, 150mM NaCl, 0.02% sodium azide and 50% glycerol, 0.4-0.5mg/ml BSA.

Immunogen

A synthesized peptide derived from human GLO1 Catalyzes the conversion of hemimercaptal, formed from methylglyoxal and glutathione, to S-lactoylglutathione.

Purification

Affinity-chromatography

Storage

Store at -20°C for one year. For short term storage and frequent use, store at 4°C for up to one month. Avoid repeated freeze-thaw cycles.

Anti-GLO1 Monoclonal Antibody - Protein Information

Name GLO1

Function

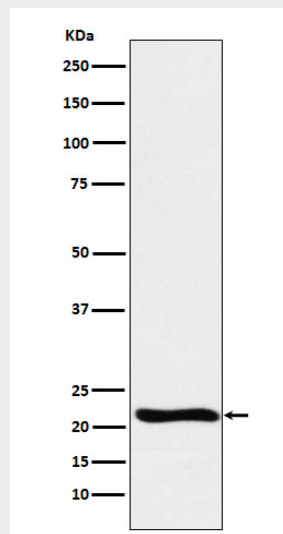
Catalyzes the conversion of hemimercaptal, formed from methylglyoxal and glutathione, to S-lactoylglutathione (PubMed: [20454679](http://www.uniprot.org/citations/20454679), PubMed: [23122816](http://www.uniprot.org/citations/23122816), PubMed: [9705294](http://www.uniprot.org/citations/9705294), PubMed: [19199007](http://www.uniprot.org/citations/19199007)). Involved in the regulation of TNF-induced transcriptional activity of NF-kappa-B (PubMed: [19199007](http://www.uniprot.org/citations/19199007)). Required for normal osteoclastogenesis (By similarity).

Anti-GLO1 Monoclonal Antibody - Protocols

Provided below are standard protocols that you may find useful for product applications.

- [Western Blot](#)
- [Blocking Peptides](#)
- [Dot Blot](#)
- [Immunohistochemistry](#)
- [Immunofluorescence](#)
- [Immunoprecipitation](#)
- [Flow Cytometry](#)
- [Cell Culture](#)

Anti-GLO1 Monoclonal Antibody - Images



Western blot analysis of GLO1 expression in Raji cell lysate.