

Anti-TSH beta Rabbit Monoclonal Antibody Catalog # ABO14731

Specification

Anti-TSH beta Rabbit Monoclonal Antibody - Product Information

Application	WB, IHC
Primary Accession	P01222
Host	Rabbit
Isotype	Rabbit IgG
Reactivity	Human
Clonality	Monoclonal
Format	Liquid

Description

Anti-TSH beta Rabbit Monoclonal Antibody . Tested in WB, IHC applications. This antibody reacts with Human.

Anti-TSH beta Rabbit Monoclonal Antibody - Additional Information

Gene ID 7252

Other Names

Thyrotropin subunit beta, Thyroid-stimulating hormone subunit beta, TSH-B, TSH-beta, Thyrotropin beta chain, Thyrotropin alfa, TSHB

Application Details

WB 1:500-1:2000
IHC 1:50-1:200

Contents

Rabbit IgG in phosphate buffered saline, pH 7.4, 150mM NaCl, 0.02% sodium azide and 50% glycerol, 0.4-0.5mg/ml BSA.

Immunogen

A synthesized peptide derived from human TSH beta

Purification

Affinity-chromatography

Storage

Store at -20°C for one year. For short term storage and frequent use, store at 4°C for up to one month. Avoid repeated freeze-thaw cycles.

Anti-TSH beta Rabbit Monoclonal Antibody - Protein Information

Name TSHB

Function

Indispensable for the control of thyroid structure and metabolism.

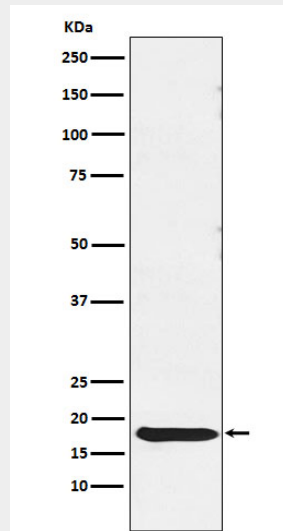
Cellular Location
Secreted.

Anti-TSH beta Rabbit Monoclonal Antibody - Protocols

Provided below are standard protocols that you may find useful for product applications.

- [Western Blot](#)
- [Blocking Peptides](#)
- [Dot Blot](#)
- [Immunohistochemistry](#)
- [Immunofluorescence](#)
- [Immunoprecipitation](#)
- [Flow Cytometry](#)
- [Cell Culture](#)

Anti-TSH beta Rabbit Monoclonal Antibody - Images



Western blot analysis of TSH beta expression in Human pituitary lysate.