

Anti-Napsin A NAPSA Monoclonal Antibody Catalog # ABO14708

Specification

Anti-Napsin A NAPSA Monoclonal Antibody - Product Information

Application	WB, IHC, IP
Primary Accession	O96009
Host	Rabbit
Isotype	Rabbit IgG
Reactivity	Human
Clonality	Monoclonal
Format	Liquid

Description

Anti-Napsin A NAPSA Monoclonal Antibody . Tested in WB, IHC, IP applications. This antibody reacts with Human.

Anti-Napsin A NAPSA Monoclonal Antibody - Additional Information

Gene ID 9476

Other Names

Napsin-A, 3.4.23.-, Aspartyl protease 4, ASP4, Asp 4, Napsin-1, TA01/TA02, NAPSA, NAP1, NAPA

Application Details

WB 1:1000-1:5000
IHC 1:50-1:200
IP 1:50

Contents

Rabbit IgG in phosphate buffered saline, pH 7.4, 150mM NaCl, 0.02% sodium azide and 50% glycerol, 0.4-0.5mg/ml BSA.

Immunogen

A synthesized peptide derived from human NAPSIN A May be involved in processing of pneumocyte surfactant precursors.

Purification

Affinity-chromatography

Storage

Store at -20°C for one year. For short term storage and frequent use, store at 4°C for up to one month. Avoid repeated freeze-thaw cycles.

Anti-Napsin A NAPSA Monoclonal Antibody - Protein Information

Name NAPSA

Synonyms NAP1, NAPA

Function

May be involved in processing of pneumocyte surfactant precursors.

Cellular Location

Secreted.

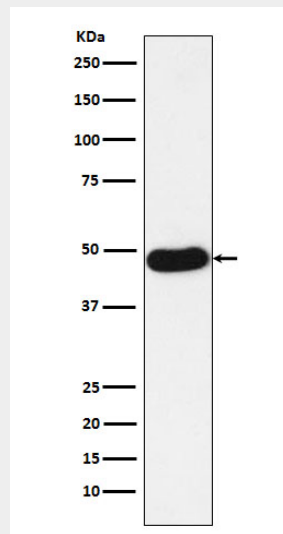
Tissue Location

Expressed predominantly in adult lung (type II pneumocytes) and kidney and in fetal lung. Low levels in adult spleen and very low levels in peripheral blood leukocytes

Anti-Napsin A NAPSA Monoclonal Antibody - Protocols

Provided below are standard protocols that you may find useful for product applications.

- [Western Blot](#)
- [Blocking Peptides](#)
- [Dot Blot](#)
- [Immunohistochemistry](#)
- [Immunofluorescence](#)
- [Immunoprecipitation](#)
- [Flow Cytometry](#)
- [Cell Culture](#)

Anti-Napsin A NAPSA Monoclonal Antibody - Images

Western blot analysis of NAPSIN A expression in Human lung adenocarcinoma lysate.