

Anti-MST1 Rabbit Monoclonal Antibody Catalog # ABO14707

Specification

Anti-MST1 Rabbit Monoclonal Antibody - Product Information

Application	WB, IHC, FC
Primary Accession	P26927
Host	Rabbit
Isotype	Rabbit IgG
Reactivity	Rat, Human, Mouse
Clonality	Monoclonal
Format	Liquid

Description

Anti-MST1 Rabbit Monoclonal Antibody . Tested in WB, IHC, Flow Cytometry applications. This antibody reacts with Human, Mouse, Rat.

Anti-MST1 Rabbit Monoclonal Antibody - Additional Information

Gene ID 4485

Other Names

Hepatocyte growth factor-like protein, Macrophage stimulatory protein, Macrophage-stimulating protein, MSP, Hepatocyte growth factor-like protein alpha chain, Hepatocyte growth factor-like protein beta chain, MST1, D3F15S2, DNF15S2, HGFL

Application Details

WB 1:500-1:2000
IHC 1:50-1:200
FC 1:50

Contents

Rabbit IgG in phosphate buffered saline, pH 7.4, 150mM NaCl, 0.02% sodium azide and 50% glycerol, 0.4-0.5mg/ml BSA.

Immunogen

A synthesized peptide derived from human MST1

Purification

Affinity-chromatography

Storage

Store at -20°C for one year. For short term storage and frequent use, store at 4°C for up to one month. Avoid repeated freeze-thaw cycles.

Anti-MST1 Rabbit Monoclonal Antibody - Protein Information

Name MST1

Synonyms D3F15S2, DNF15S2, HGFL

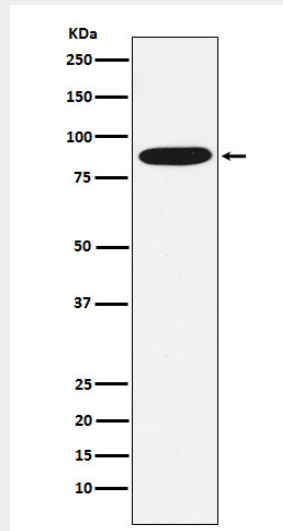
Cellular Location
Secreted.

Anti-MST1 Rabbit Monoclonal Antibody - Protocols

Provided below are standard protocols that you may find useful for product applications.

- [Western Blot](#)
- [Blocking Peptides](#)
- [Dot Blot](#)
- [Immunohistochemistry](#)
- [Immunofluorescence](#)
- [Immunoprecipitation](#)
- [Flow Cytometry](#)
- [Cell Culture](#)

Anti-MST1 Rabbit Monoclonal Antibody - Images



Western blot analysis of MST1 expression in HepG2 cell lysate.