

**Anti-Netrin 1 NTN1 Monoclonal Antibody**  
Catalog # ABO14700

**Specification**

---

**Anti-Netrin 1 NTN1 Monoclonal Antibody - Product Information**

Application	WB, IF, ICC
Primary Accession	<a href="#">O95631</a>
Host	Rabbit
Isotype	Rabbit IgG
Reactivity	Rat, Human, Mouse
Clonality	Monoclonal
Format	Liquid

**Description**

Anti-Netrin 1 NTN1 Monoclonal Antibody . Tested in WB, ICC/IF applications. This antibody reacts with Human, Mouse, Rat.

**Anti-Netrin 1 NTN1 Monoclonal Antibody - Additional Information**

**Gene ID** 9423

**Other Names**

Netrin-1, Epididymis tissue protein Li 131P, NTN1, NTN1L

**Application Details**

WB 1:500-1:2000<br>ICC/IF 1:50-1:200

**Contents**

Rabbit IgG in phosphate buffered saline, pH 7.4, 150mM NaCl, 0.02% sodium azide and 50% glycerol, 0.4-0.5mg/ml BSA.

**Immunogen**

A synthesized peptide derived from human Netrin 1

**Purification**

Affinity-chromatography

**Storage**

**Store at -20°C for one year. For short term storage and frequent use, store at 4°C for up to one month. Avoid repeated freeze-thaw cycles.**

**Anti-Netrin 1 NTN1 Monoclonal Antibody - Protein Information**

**Name** NTN1

**Synonyms** NTN1L

**Function**

Netrins control guidance of CNS commissural axons and peripheral motor axons. Its association with either DCC or some UNC5 receptors will lead to axon attraction or repulsion, respectively. Binding to UNC5C might cause dissociation of UNC5C from polymerized TUBB3 in microtubules and thereby lead to increased microtubule dynamics and axon repulsion (PubMed:<a href="http://www.uniprot.org/citations/28483977" target="\_blank">28483977</a>). Involved in dorsal root ganglion axon projection towards the spinal cord (PubMed:<a href="http://www.uniprot.org/citations/28483977" target="\_blank">28483977</a>). It also serves as a survival factor via its association with its receptors which prevent the initiation of apoptosis. Involved in tumorigenesis by regulating apoptosis (PubMed:<a href="http://www.uniprot.org/citations/15343335" target="\_blank">15343335</a>).

#### Cellular Location

Secreted. Cytoplasm. Note=Mainly secreted

#### Tissue Location

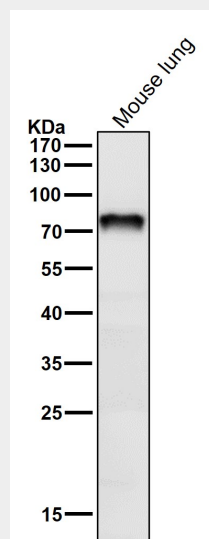
Widely expressed in normal adult tissues with highest levels in heart, small intestine, colon, liver and prostate Reduced expression in brain tumors and neuroblastomas. Expressed in epididymis (at protein level).

### Anti-Netrin 1 NTN1 Monoclonal Antibody - Protocols

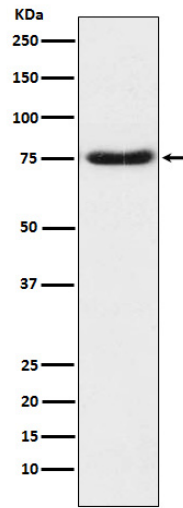
Provided below are standard protocols that you may find useful for product applications.

- [Western Blot](#)
- [Blocking Peptides](#)
- [Dot Blot](#)
- [Immunohistochemistry](#)
- [Immunofluorescence](#)
- [Immunoprecipitation](#)
- [Flow Cytometry](#)
- [Cell Culture](#)

### Anti-Netrin 1 NTN1 Monoclonal Antibody - Images



All lanes use the Antibody at 1:1K dilution for 1 hour at room temperature.



Western blot analysis of Netrin 1 expression in Human fetal brain lysate.