

Anti-CD48 Monoclonal Antibody
Catalog # ABO14690**Specification**

Anti-CD48 Monoclonal Antibody - Product Information

Application	WB, IHC, IF, ICC, IP
Primary Accession	P09326
Host	Rabbit
Isotype	Rabbit IgG
Reactivity	Human
Clonality	Monoclonal
Format	Liquid

Description

Anti-CD48 Monoclonal Antibody . Tested in WB, IHC, ICC/IF, IP applications. This antibody reacts with Human.

Anti-CD48 Monoclonal Antibody - Additional Information

Gene ID 962

Other Names

CD48 antigen, B-lymphocyte activation marker BLAST-1, BCM1 surface antigen, Leukocyte antigen MEM-102, SLAM family member 2, SLAMF2, Signaling lymphocytic activation molecule 2, TCT.1, CD48, CD48, BCM1, BLAST1

Application Details

WB 1:500-1:2000
IHC 1:50-1:200
ICC/IF 1:50-1:200
IP 1:50

Contents

Rabbit IgG in phosphate buffered saline, pH 7.4, 150mM NaCl, 0.02% sodium azide and 50% glycerol, 0.4-0.5mg/ml BSA.

Immunogen

A synthesized peptide derived from human CD48 Ligand for CD2. Might facilitate interaction between activated lymphocytes. Probably involved in regulating T-cell activation.

Purification

Affinity-chromatography

Storage

Store at -20°C for one year. For short term storage and frequent use, store at 4°C for up to one month. Avoid repeated freeze-thaw cycles.

Anti-CD48 Monoclonal Antibody - Protein Information

Name CD48

Synonyms BCM1, BLAST1**Function**

Glycosylphosphatidylinositol (GPI)-anchored cell surface glycoprotein that interacts via its N-terminal immunoglobulin domain with cell surface receptors including CD244/2B4 or CD2 to regulate immune cell function and activation (PubMed:12007789, PubMed:19494291, PubMed:27249817, PubMed:9841922). Participates in T-cell signaling transduction by associating with CD2 and efficiently bringing the Src family protein kinase LCK and LAT to the TCR/CD3 complex (PubMed:19494291). In turn, promotes LCK phosphorylation and subsequent activation (PubMed:12007789). Induces the phosphorylation of the cytoplasmic immunoreceptor tyrosine switch motifs (ITSMs) of CD244 initiating a series of signaling events that leads to the generation of the immunological synapse and the directed release of cytolytic granules containing perforin and granzymes by T-lymphocytes and NK- cells (PubMed:27249817).

Cellular Location

Cell membrane; Lipid-anchor, GPI-anchor. Membrane raft. Secreted

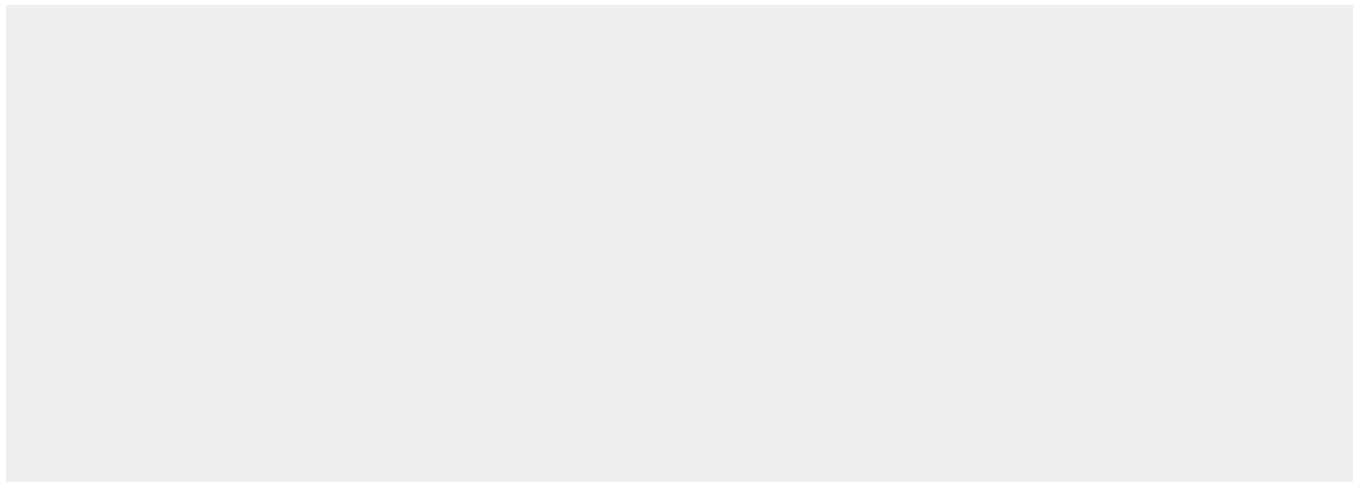
Tissue Location

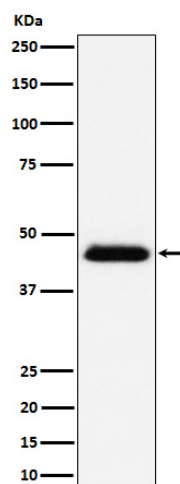
Widely expressed on all hematopoietic cells.

Anti-CD48 Monoclonal Antibody - Protocols

Provided below are standard protocols that you may find useful for product applications.

- [Western Blot](#)
- [Blocking Peptides](#)
- [Dot Blot](#)
- [Immunohistochemistry](#)
- [Immunofluorescence](#)
- [Immunoprecipitation](#)
- [Flow Cytometry](#)
- [Cell Culture](#)

Anti-CD48 Monoclonal Antibody - Images



Western blot analysis of CD48 expression in Raji cell lysate.