

Anti-Biglycan Monoclonal Antibody
Catalog # ABO14678**Specification**

Anti-Biglycan Monoclonal Antibody - Product Information

Application	WB, IP, FC
Primary Accession	P21810
Host	Rabbit
Isotype	Rabbit IgG
Reactivity	Rat, Human, Mouse
Clonality	Monoclonal
Format	Liquid

Description

Anti-Biglycan Monoclonal Antibody . Tested in WB, IP, Flow Cytometry applications. This antibody reacts with Human, Mouse, Rat.

Anti-Biglycan Monoclonal Antibody - Additional Information

Gene ID 633

Other Names

Biglycan, Bone/cartilage proteoglycan I, PG-S1, BGN, SLRR1A

Application Details

WB 1:500-1:2000
IP 1:50
FC 1:100

Contents

Rabbit IgG in phosphate buffered saline, pH 7.4, 150mM NaCl, 0.02% sodium azide and 50% glycerol, 0.4-0.5mg/ml BSA.

Immunogen

A synthesized peptide derived from human Biglycan May be involved in collagen fiber assembly.

Purification

Affinity-chromatography

Storage

Store at -20°C for one year. For short term storage and frequent use, store at 4°C for up to one month. Avoid repeated freeze-thaw cycles.

Anti-Biglycan Monoclonal Antibody - Protein Information

Name BGN

Synonyms SLRR1A

Function

May be involved in collagen fiber assembly.

Cellular Location

Secreted, extracellular space, extracellular matrix

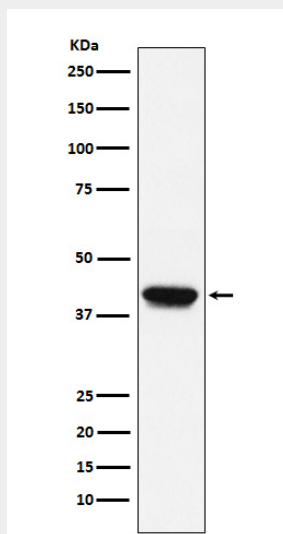
Tissue Location

Detected in placenta (at protein level) (PubMed:32337544). Found in several connective tissues, especially in articular cartilages.

Anti-Biglycan Monoclonal Antibody - Protocols

Provided below are standard protocols that you may find useful for product applications.

- [Western Blot](#)
- [Blocking Peptides](#)
- [Dot Blot](#)
- [Immunohistochemistry](#)
- [Immunofluorescence](#)
- [Immunoprecipitation](#)
- [Flow Cytometry](#)
- [Cell Culture](#)

Anti-Biglycan Monoclonal Antibody - Images

Western blot analysis of Biglycan expression in C2C12 cell lysate.