

Anti-Casein Kinase 2 beta Monoclonal Antibody
Catalog # ABO14673**Specification****Anti-Casein Kinase 2 beta Monoclonal Antibody - Product Information**

Application	WB, IHC, IP
Primary Accession	P67870
Host	Rabbit
Isotype	Rabbit IgG
Reactivity	Rat, Human, Mouse
Clonality	Monoclonal
Format	Liquid

Description

Anti-Casein Kinase 2 beta Monoclonal Antibody . Tested in WB, IHC, IP applications. This antibody reacts with Human, Mouse, Rat.

Anti-Casein Kinase 2 beta Monoclonal Antibody - Additional Information

Gene ID 1460

Other Names

Casein kinase II subunit beta, CK II beta, Phosvitin, Protein G5a, CSNK2B (http://www.genenames.org/cgi-bin/gene_symbol_report?hgnc_id=2460), CK2N, G5A

Application Details

WB 1:500-1:2000
IHC 1:50-1:200
IP 1:50

Contents

Rabbit IgG in phosphate buffered saline, pH 7.4, 150mM NaCl, 0.02% sodium azide and 50% glycerol, 0.4-0.5mg/ml BSA.

Immunogen

A synthesized peptide derived from human Casein Kinase 2 beta Participates in Wnt signaling (By similarity). Plays a complex role in regulating the basal catalytic activity of the alpha subunit.

Purification

Affinity-chromatography

Storage

Store at -20°C for one year. For short term storage and frequent use, store at 4°C for up to one month. Avoid repeated freeze-thaw cycles.

Anti-Casein Kinase 2 beta Monoclonal Antibody - Protein Information

Name CSNK2B ([HGNC:2460](#))

Synonyms CK2N, G5A

Function

Regulatory subunit of casein kinase II/CK2. As part of the kinase complex regulates the basal catalytic activity of the alpha subunit a constitutively active serine/threonine-protein kinase that phosphorylates a large number of substrates containing acidic residues C-terminal to the phosphorylated serine or threonine (PubMed: [11239457](http://www.uniprot.org/citations/11239457), PubMed: [16818610](http://www.uniprot.org/citations/16818610)). Participates in Wnt signaling (By similarity).

Cellular Location

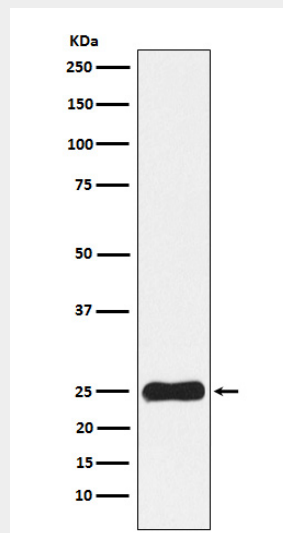
Nucleus.

Anti-Casein Kinase 2 beta Monoclonal Antibody - Protocols

Provided below are standard protocols that you may find useful for product applications.

- [Western Blot](#)
- [Blocking Peptides](#)
- [Dot Blot](#)
- [Immunohistochemistry](#)
- [Immunofluorescence](#)
- [Immunoprecipitation](#)
- [Flow Cytometry](#)
- [Cell Culture](#)

Anti-Casein Kinase 2 beta Monoclonal Antibody - Images



Western blot analysis of Casein Kinase 2 beta expression in HepG2 cell lysate.