

## Anti-Gelsolin GSN Rabbit Monoclonal Antibody Catalog # ABO14671

### Specification

---

#### Anti-Gelsolin GSN Rabbit Monoclonal Antibody - Product Information

Application	WB, IHC, IF, ICC, FC
Primary Accession	<a href="#">P06396</a>
Host	Rabbit
Isotype	Rabbit IgG
Reactivity	Human, Mouse
Clonality	Monoclonal
Format	Liquid

#### Description

Anti-Gelsolin GSN Rabbit Monoclonal Antibody . Tested in WB, IHC, ICC/IF, Flow Cytometry applications. This antibody reacts with Human, Mouse.

#### Anti-Gelsolin GSN Rabbit Monoclonal Antibody - Additional Information

Gene ID 2934

#### Other Names

Gelsolin, AGEL, Actin-depolymerizing factor, ADF, Brevin, GSN

#### Application Details

WB 1:1000-1:5000<br>IHC 1:50-1:200<br>ICC/IF 1:50-1:200<br>FC 1:50

#### Contents

Rabbit IgG in phosphate buffered saline, pH 7.4, 150mM NaCl, 0.02% sodium azide and 50% glycerol, 0.4-0.5mg/ml BSA.

#### Immunogen

A synthesized peptide derived from human Gelsolin.

#### Purification

Affinity-chromatography

Storage

**Store at -20°C for one year. For short term storage and frequent use, store at 4°C for up to one month. Avoid repeated freeze-thaw cycles.**

#### Anti-Gelsolin GSN Rabbit Monoclonal Antibody - Protein Information

Name GSN

#### Function

Calcium-regulated, actin-modulating protein that binds to the plus (or barbed) ends of actin monomers or filaments, preventing monomer exchange (end-blocking or capping). It can promote

the assembly of monomers into filaments (nucleation) as well as sever filaments already formed (PubMed:<a href="http://www.uniprot.org/citations/19666512" target="\_blank">19666512</a>). Plays a role in ciliogenesis (PubMed:<a href="http://www.uniprot.org/citations/20393563" target="\_blank">20393563</a>).

#### Cellular Location

[Isoform 2]: Cytoplasm, cytoskeleton.

#### Tissue Location

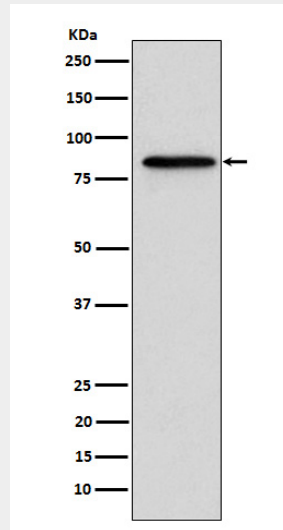
Phagocytic cells, platelets, fibroblasts, nonmuscle cells, smooth and skeletal muscle cells

### Anti-Gelsolin GSN Rabbit Monoclonal Antibody - Protocols

Provided below are standard protocols that you may find useful for product applications.

- [Western Blot](#)
- [Blocking Peptides](#)
- [Dot Blot](#)
- [Immunohistochemistry](#)
- [Immunofluorescence](#)
- [Immunoprecipitation](#)
- [Flow Cytometry](#)
- [Cell Culture](#)

### Anti-Gelsolin GSN Rabbit Monoclonal Antibody - Images



Western blot analysis of Gelsolin expression in A431 cell lysate.