

**Anti-KDM4A Monoclonal Antibody**  
Catalog # ABO14668**Specification****Anti-KDM4A Monoclonal Antibody - Product Information**

Application	WB, IHC, IP
Primary Accession	<a href="#">O75164</a>
Host	Rabbit
Isotype	Rabbit IgG
Reactivity	Rat, Human, Mouse
Clonality	Monoclonal
Format	Liquid

**Description**

Anti-KDM4A Monoclonal Antibody . Tested in WB, IHC, IP applications. This antibody reacts with Human, Mouse, Rat.

**Anti-KDM4A Monoclonal Antibody - Additional Information**

**Gene ID** 9682

**Other Names**

Lysine-specific demethylase 4A, 1.14.11.66, 1.14.11.69, JmjC domain-containing histone demethylation protein 3A, Jumonji domain-containing protein 2A, [histone H3]-trimethyl-L-lysine(36) demethylase 4A, [histone H3]-trimethyl-L-lysine(9) demethylase 4A, KDM4A, JHDM3A, JMJD2, JMJD2A, KIAA0677

**Application Details**

WB 1:500-1:2000<br>IHC 1:50-1:200<br>IP 1:60

**Contents**

Rabbit IgG in phosphate buffered saline, pH 7.4, 150mM NaCl, 0.02% sodium azide and 50% glycerol, 0.4-0.5mg/ml BSA.

**Immunogen**

A synthesized peptide derived from human KDM4A

**Purification**

Affinity-chromatography

**Storage**

**Store at -20°C for one year. For short term storage and frequent use, store at 4°C for up to one month. Avoid repeated freeze-thaw cycles.**

**Anti-KDM4A Monoclonal Antibody - Protein Information**

**Name** KDM4A

**Synonyms** JHDM3A, JMJD2, JMJD2A, KIAA0677

### Function

Histone demethylase that specifically demethylates 'Lys-9' and 'Lys-36' residues of histone H3, thereby playing a central role in histone code (PubMed:<a href="http://www.uniprot.org/citations/26741168" target="\_blank">26741168</a>, PubMed:<a href="http://www.uniprot.org/citations/21768309" target="\_blank">21768309</a>). Does not demethylate histone H3 'Lys-4', H3 'Lys-27' nor H4 'Lys-20'. Demethylates trimethylated H3 'Lys-9' and H3 'Lys-36' residue, while it has no activity on mono- and dimethylated residues. Demethylation of Lys residue generates formaldehyde and succinate. Participates in transcriptional repression of ASCL2 and E2F-responsive promoters via the recruitment of histone deacetylases and NCOR1, respectively.

### Cellular Location

Nucleus {ECO:0000255|PROSITE-ProRule:PRU00537, ECO:0000269|PubMed:15927959, ECO:0000269|PubMed:16024779}

### Tissue Location

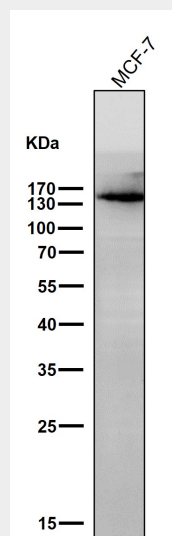
Ubiquitous..

## Anti-KDM4A Monoclonal Antibody - Protocols

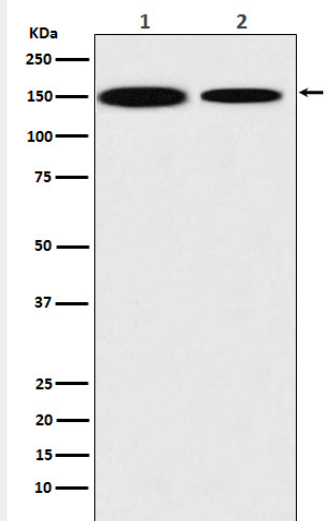
Provided below are standard protocols that you may find useful for product applications.

- [Western Blot](#)
- [Blocking Peptides](#)
- [Dot Blot](#)
- [Immunohistochemistry](#)
- [Immunofluorescence](#)
- [Immunoprecipitation](#)
- [Flow Cytometry](#)
- [Cell Culture](#)

## Anti-KDM4A Monoclonal Antibody - Images



All lanes use the Antibody at 1:1K dilution for 1 hour at room temperature.



Western blot analysis of KDM4A / JHDM3A / JMJD2A expression in (1) HEK293 cell lysate; (2) NIH3T3 cell lysate.