

Anti-HES5 Monoclonal Antibody
Catalog # ABO14665

Specification

Anti-HES5 Monoclonal Antibody - Product Information

| | |
|-------------------|------------------------|
| Application | WB, IHC, IP |
| Primary Accession | Q5TA89 |
| Host | Rabbit |
| Isotype | Rabbit IgG |
| Reactivity | Rat, Human, Mouse |
| Clonality | Monoclonal |
| Format | Liquid |

Description

Anti-HES5 Monoclonal Antibody . Tested in WB, IHC, IP applications. This antibody reacts with Human, Mouse, Rat.

Anti-HES5 Monoclonal Antibody - Additional Information

Gene ID 388585

Other Names

Transcription factor HES-5, Class B basic helix-loop-helix protein 38, bHLHb38, Hairy and enhancer of split 5, HES5, BHLHB38

Application Details

WB 1:500-1:2000
IHC 1:50-1:200
IP 1:50

Contents

Rabbit IgG in phosphate buffered saline, pH 7.4, 150mM NaCl, 0.02% sodium azide and 50% glycerol, 0.4-0.5mg/ml BSA.

Immunogen

A synthesized peptide derived from human HES5 Transcriptional repressor of genes that require a bHLH protein for their transcription.

Purification

Affinity-chromatography

Storage

Store at -20°C for one year. For short term storage and frequent use, store at 4°C for up to one month. Avoid repeated freeze-thaw cycles.

Anti-HES5 Monoclonal Antibody - Protein Information

Name HES5

Synonyms BHLHB38

Function

Transcriptional repressor of genes that require a bHLH protein for their transcription. Plays an important role as neurogenesis negative regulator (By similarity).

Cellular Location

Nucleus {ECO:0000255|PROSITE-ProRule:PRU00380, ECO:0000255|PROSITE-ProRule:PRU00981}

Tissue Location

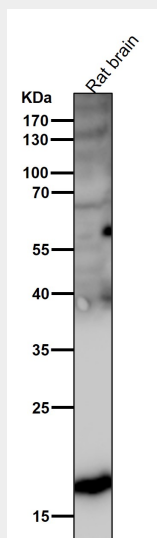
Expressed in fetal heart and brain tumors.

Anti-HES5 Monoclonal Antibody - Protocols

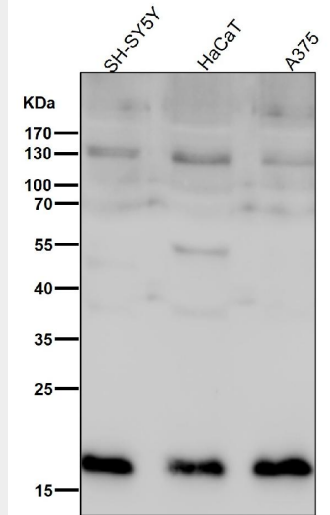
Provided below are standard protocols that you may find useful for product applications.

- [Western Blot](#)
- [Blocking Peptides](#)
- [Dot Blot](#)
- [Immunohistochemistry](#)
- [Immunofluorescence](#)
- [Immunoprecipitation](#)
- [Flow Cytometry](#)
- [Cell Culture](#)

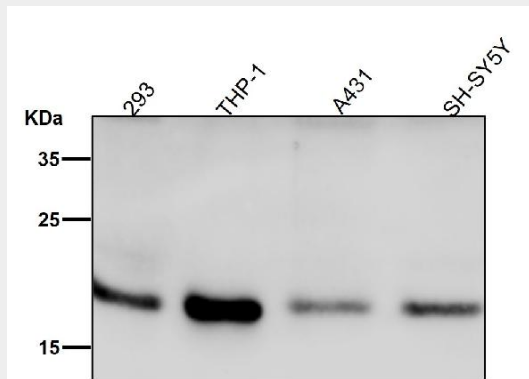
Anti-HES5 Monoclonal Antibody - Images



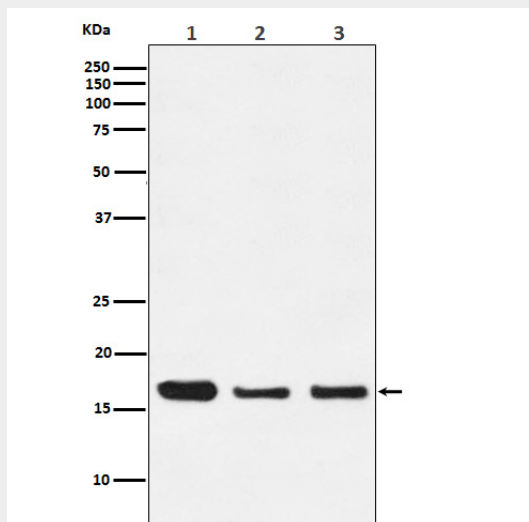
All lanes use the Antibody at 1:2K dilution for 1 hour at room temperature.



All lanes use the Antibody at 1:2K dilution for 1 hour at room temperature.



All lanes use the Antibody at 1:2K dilution for 1 hour at room temperature.



Western blot analysis of HES5 expression in (1) 293 cell lysate; (2) Mouse spleen lysate; (3) C6 cell lysate.