

**Anti-Thioredoxin 2 Monoclonal Antibody**  
Catalog # ABO14660

**Specification**

---

**Anti-Thioredoxin 2 Monoclonal Antibody - Product Information**

Application	WB, IHC, IF, ICC, FC
Primary Accession	<a href="#">Q99757</a>
Host	Rabbit
Isotype	Rabbit IgG
Reactivity	Rat, Human, Mouse
Clonality	Monoclonal
Format	Liquid

**Description**

Anti-Thioredoxin 2 Monoclonal Antibody . Tested in WB, IHC, ICC/IF, Flow Cytometry applications. This antibody reacts with Human, Mouse, Rat.

**Anti-Thioredoxin 2 Monoclonal Antibody - Additional Information**

**Gene ID** 25828

**Other Names**

Thioredoxin, mitochondrial, MTRX, Mt-Trx, Thioredoxin-2, TXN2, TRX2

**Application Details**

WB 1:1000-1:5000<br>IHC 1:50-1:200<br>ICC/IF 1:50-1:200<br>FC 1:100

**Contents**

Rabbit IgG in phosphate buffered saline, pH 7.4, 150mM NaCl, 0.02% sodium azide and 50% glycerol, 0.4-0.5mg/ml BSA.

**Immunogen**

A synthesized peptide derived from human Thioredoxin 2 Thioredoxins (Trx) are small, multi-functional proteins with oxidoreductase activity and are ubiquitous in essentially all living cells. Trx contains a redox-active disulfide/dithiol group within the conserved Cys-Gly-Pro-Cys active site.

**Purification**

Affinity-chromatography

Storage

**Store at -20°C for one year. For short term storage and frequent use, store at 4°C for up to one month. Avoid repeated freeze-thaw cycles.**

**Anti-Thioredoxin 2 Monoclonal Antibody - Protein Information**

**Name** TXN2

## Synonyms TRX2

### Function

Important for the control of mitochondrial reactive oxygen species homeostasis, apoptosis regulation and cell viability. Possesses a dithiol-reducing activity.

### Cellular Location

Mitochondrion

### Tissue Location

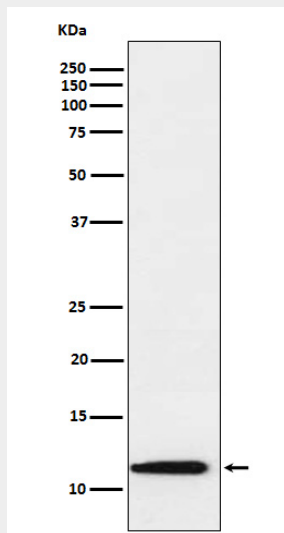
Widely expressed in adult (at protein level) and fetal tissues.

## Anti-Thioredoxin 2 Monoclonal Antibody - Protocols

Provided below are standard protocols that you may find useful for product applications.

- [Western Blot](#)
- [Blocking Peptides](#)
- [Dot Blot](#)
- [Immunohistochemistry](#)
- [Immunofluorescence](#)
- [Immunoprecipitation](#)
- [Flow Cytometry](#)
- [Cell Culture](#)

## Anti-Thioredoxin 2 Monoclonal Antibody - Images



Western blot analysis of Thioredoxin 2 expression in Raji cell lysate.