

Anti-Cytochrome P450 Reductase Monoclonal Antibody
Catalog # ABO14655**Specification****Anti-Cytochrome P450 Reductase Monoclonal Antibody - Product Information**

Application	WB, IHC, IF, ICC, FC
Primary Accession	P16435
Host	Rabbit
Isotype	Rabbit IgG
Reactivity	Rat, Human, Mouse
Clonality	Monoclonal
Format	Liquid

Description

Anti-Cytochrome P450 Reductase Monoclonal Antibody . Tested in WB, IHC, ICC/IF, Flow Cytometry applications. This antibody reacts with Human, Mouse, Rat.

Anti-Cytochrome P450 Reductase Monoclonal Antibody - Additional Information

Gene ID 5447

Other Names

NADPH--cytochrome P450 reductase {ECO:0000255|HAMAP-Rule:MF_03212}, CPR {ECO:0000255|HAMAP-Rule:MF_03212}, P450R {ECO:0000255|HAMAP-Rule:MF_03212}, 1.6.2.4 {ECO:0000255|HAMAP-Rule:MF_03212}, POR {ECO:0000255|HAMAP-Rule:MF_03212}, CYPOR

Application Details

WB 1:1000-1:5000
IHC 1:50-1:200
ICC/IF 1:50-1:200
FC 1:20

Contents

Rabbit IgG in phosphate buffered saline, pH 7.4, 150mM NaCl, 0.02% sodium azide and 50% glycerol, 0.4-0.5mg/ml BSA.

Immunogen

A synthesized peptide derived from human Cytochrome P450 Reductase This enzyme is required for electron transfer from NADP to cytochrome P450 in microsomes. It can also provide electron transfer to heme oxygenase and cytochrome B5.

Purification

Affinity-chromatography

Storage

Store at -20°C for one year. For short term storage and frequent use, store at 4°C for up to one month. Avoid repeated freeze-thaw cycles.

Anti-Cytochrome P450 Reductase Monoclonal Antibody - Protein Information

Name POR {ECO:0000255|HAMAP-Rule:MF_03212}

Synonyms CYPOR

Function

This enzyme is required for electron transfer from NADP to cytochrome P450 in microsomes. It can also provide electron transfer to heme oxygenase and cytochrome B5.

Cellular Location

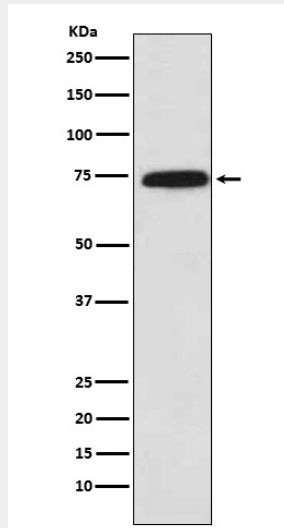
Endoplasmic reticulum membrane {ECO:0000255|HAMAP-Rule:MF_03212}; Single-pass membrane protein {ECO:0000255|HAMAP-Rule:MF_03212}; Cytoplasmic side {ECO:0000255|HAMAP-Rule:MF_03212}

Anti-Cytochrome P450 Reductase Monoclonal Antibody - Protocols

Provided below are standard protocols that you may find useful for product applications.

- [Western Blot](#)
- [Blocking Peptides](#)
- [Dot Blot](#)
- [Immunohistochemistry](#)
- [Immunofluorescence](#)
- [Immunoprecipitation](#)
- [Flow Cytometry](#)
- [Cell Culture](#)

Anti-Cytochrome P450 Reductase Monoclonal Antibody - Images



Western blot analysis of Cytochrome P450 Reductase expression in A431 cell lysate.