

Anti-PHOX2B Monoclonal Antibody
Catalog # ABO14654

Specification

Anti-PHOX2B Monoclonal Antibody - Product Information

Application	WB, IHC, IF, ICC
Primary Accession	Q99453
Host	Rabbit
Isotype	Rabbit IgG
Reactivity	Human, Mouse
Clonality	Monoclonal
Format	Liquid

Description

Anti-PHOX2B Monoclonal Antibody . Tested in WB, IHC, ICC/IF applications. This antibody reacts with Human, Mouse.

Anti-PHOX2B Monoclonal Antibody - Additional Information

Gene ID 8929

Other Names

Paired mesoderm homeobox protein 2B, Neuroblastoma Phox, NBPhox, PHOX2B homeodomain protein, Paired-like homeobox 2B, PHOX2B, PMX2B

Application Details

WB 1:500-1:2000
IHC 1:100-1:500
ICC/IF 1:50-1:200

Contents

Rabbit IgG in phosphate buffered saline, pH 7.4, 150mM NaCl, 0.02% sodium azide and 50% glycerol, 0.4-0.5mg/ml BSA.

Immunogen

A synthesized peptide derived from human PHOX2B Involved in the development of several major noradrenergic neuron populations, including the locus coeruleus. Transcription factor which could determine a neurotransmitter phenotype in vertebrates. Enhances second-messenger-mediated activation of the dopamine beta-hydroxylase and c-fos promoters, and of several enhancers including cAMP-response element and serum-response element.

Purification

Affinity-chromatography

Storage

Store at -20°C for one year. For short term storage and frequent use, store at 4°C for up to one month. Avoid repeated freeze-thaw cycles.

Anti-PHOX2B Monoclonal Antibody - Protein Information

Name PHOX2B

Synonyms PMX2B

Function

Involved in the development of several major noradrenergic neuron populations, including the locus coeruleus. Transcription factor which could determine a neurotransmitter phenotype in vertebrates. Enhances second-messenger-mediated activation of the dopamine beta- hydrolase and c-fos promoters, and of several enhancers including cAMP- response element and serum-response element.

Cellular Location

Nucleus {ECO:0000255|PROSITE-ProRule:PRU00108}.

Tissue Location

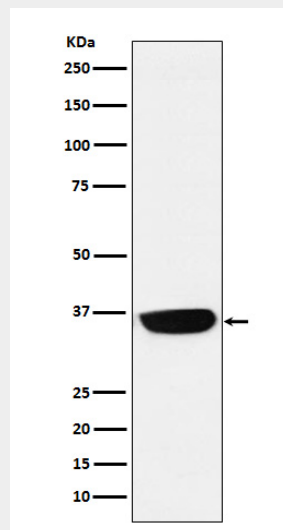
Expressed in neuroblastoma, brain and adrenal gland

Anti-PHOX2B Monoclonal Antibody - Protocols

Provided below are standard protocols that you may find useful for product applications.

- [Western Blot](#)
- [Blocking Peptides](#)
- [Dot Blot](#)
- [Immunohistochemistry](#)
- [Immunofluorescence](#)
- [Immunoprecipitation](#)
- [Flow Cytometry](#)
- [Cell Culture](#)

Anti-PHOX2B Monoclonal Antibody - Images



Western blot analysis of PHOX2B expression in Neuro-2a cell lysate.