

Anti-SET Monoclonal Antibody
Catalog # ABO14637

Specification

Anti-SET Monoclonal Antibody - Product Information

Application	WB, IHC, IF, ICC, IP, FC
Primary Accession	Q01105
Host	Rabbit
Isotype	Rabbit IgG
Reactivity	Rat, Human, Mouse
Clonality	Monoclonal
Format	Liquid

Description

Anti-SET Monoclonal Antibody . Tested in WB, IHC, ICC/IF, IP, Flow Cytometry applications. This antibody reacts with Human, Mouse, Rat.

Anti-SET Monoclonal Antibody - Additional Information

Gene ID 6418

Other Names

Protein SET, HLA-DR-associated protein II, Inhibitor of granzyme A-activated DNase, IGAAD, PHAPII, Phosphatase 2A inhibitor I2PP2A, I-2PP2A, Template-activating factor I, TAF-I, SET

Application Details

WB 1:1000-1:5000
IHC 1:50-1:200
ICC/IF 1:100-1:500
IP 1:30
FC 1:20

Contents

Rabbit IgG in phosphate buffered saline, pH 7.4, 150mM NaCl, 0.02% sodium azide and 50% glycerol, 0.4-0.5mg/ml BSA.

Immunogen

A synthesized peptide derived from human SET Multitasking protein, involved in apoptosis, transcription, nucleosome assembly and histone binding. Isoform 2 anti-apoptotic activity is mediated by inhibition of the GZMA-activated DNase, NME1.

Purification

Affinity-chromatography

Storage

Store at -20°C for one year. For short term storage and frequent use, store at 4°C for up to one month. Avoid repeated freeze-thaw cycles.

Anti-SET Monoclonal Antibody - Protein Information

Name SET

Function

Multitasking protein, involved in apoptosis, transcription, nucleosome assembly and histone chaperoning. Isoform 2 anti-apoptotic activity is mediated by inhibition of the GZMA-activated DNase, NME1. In the course of cytotoxic T-lymphocyte (CTL)-induced apoptosis, GZMA cleaves SET, disrupting its binding to NME1 and releasing NME1 inhibition. Isoform 1 and isoform 2 are potent inhibitors of protein phosphatase 2A. Isoform 1 and isoform 2 inhibit EP300/CREBBP and PCAF- mediated acetylation of histones (HAT) and nucleosomes, most probably by masking the accessibility of lysines of histones to the acetylases. The predominant target for inhibition is histone H4. HAT inhibition leads to silencing of HAT-dependent transcription and prevents active demethylation of DNA. Both isoforms stimulate DNA replication of the adenovirus genome complexed with viral core proteins; however, isoform 2 specific activity is higher.

Cellular Location

Cytoplasm, cytosol. Endoplasmic reticulum. Nucleus, nucleoplasm. Note=In the cytoplasm, found both in the cytosol and associated with the endoplasmic reticulum. The SET complex is associated with the endoplasmic reticulum. Following CTL attack and cleavage by GZMA, moves rapidly to the nucleus, where it is found in the nucleoplasm, avoiding the nucleolus. Similar translocation to the nucleus is also observed for lymphocyte-activated killer cells after the addition of calcium

Tissue Location

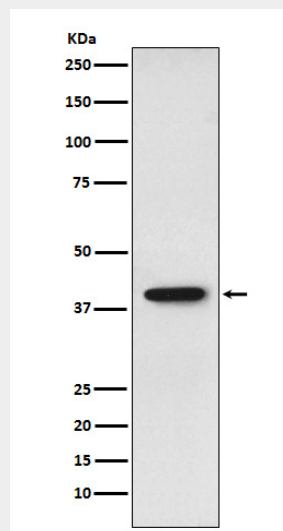
Widely expressed. Low levels in quiescent cells during serum starvation, contact inhibition or differentiation. Highly expressed in Wilms' tumor

Anti-SET Monoclonal Antibody - Protocols

Provided below are standard protocols that you may find useful for product applications.

- [Western Blot](#)
- [Blocking Peptides](#)
- [Dot Blot](#)
- [Immunohistochemistry](#)
- [Immunofluorescence](#)
- [Immunoprecipitation](#)
- [Flow Cytometry](#)
- [Cell Culture](#)

Anti-SET Monoclonal Antibody - Images



Western blot analysis of SET expression in HepG2 cell lysate.