

**Anti-PAR6 Monoclonal Antibody**  
Catalog # ABO14632

**Specification**

---

**Anti-PAR6 Monoclonal Antibody - Product Information**

Application	WB, IP
Primary Accession	<a href="#">Q9NPB6</a>
Host	Rabbit
Isotype	Rabbit IgG
Reactivity	Rat, Human, Mouse
Clonality	Monoclonal
Format	Liquid

**Description**

Anti-PAR6 Monoclonal Antibody . Tested in WB, IP applications. This antibody reacts with Human, Mouse, Rat.

**Anti-PAR6 Monoclonal Antibody - Additional Information**

**Gene ID** 50855

**Other Names**

Partitioning defective 6 homolog alpha, PAR-6, PAR-6 alpha, PAR-6A, PAR6C, Tax interaction protein 40, TIP-40, PARD6A, PAR6A

**Application Details**

WB 1:500-1:2000<br>IP 1:50

**Contents**

Rabbit IgG in phosphate buffered saline, pH 7.4, 150mM NaCl, 0.02% sodium azide and 50% glycerol, 0.4-0.5mg/ml BSA.

**Immunogen**

A synthesized peptide derived from human PAR6 Adapter protein involved in asymmetrical cell division and cell polarization processes. Probably involved in the formation of epithelial tight junctions. Association with PARD3 may prevent the interaction of PARD3 with F11R/JAM1, thereby preventing tight junction assembly.

**Purification**

Affinity-chromatography

**Storage**

**Store at -20°C for one year. For short term storage and frequent use, store at 4°C for up to one month. Avoid repeated freeze-thaw cycles.**

**Anti-PAR6 Monoclonal Antibody - Protein Information**

**Name** PARD6A

## Synonyms PAR6A

### Function

Adapter protein involved in asymmetrical cell division and cell polarization processes. Probably involved in the formation of epithelial tight junctions. Association with PARD3 may prevent the interaction of PARD3 with F11R/JAM1, thereby preventing tight junction assembly. The PARD6-PARD3 complex links GTP-bound Rho small GTPases to atypical protein kinase C proteins (PubMed:<a href="http://www.uniprot.org/citations/10873802" target="\_blank">10873802</a>). Regulates centrosome organization and function. Essential for the centrosomal recruitment of key proteins that control centrosomal microtubule organization (PubMed:<a href="http://www.uniprot.org/citations/20719959" target="\_blank">20719959</a>).

### Cellular Location

Cytoplasm. Cell membrane. Cell projection, ruffle. Cell junction, tight junction. Cytoplasm, cytoskeleton, microtubule organizing center, centrosome, centriolar satellite. Cytoplasm, cytoskeleton, microtubule organizing center, centrosome Note=Colocalizes with GTP-bound CDC42 or RAC1 at membrane ruffles and with PARD3 and PRKCI at epithelial tight junctions. Recruited to the centrosome by a microtubule and dynein-dynactin-dependent mechanism

### Tissue Location

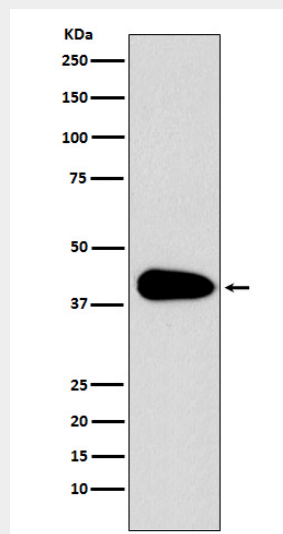
Expressed in pancreas, skeletal muscle, brain and heart. Weakly expressed in kidney and placenta

## Anti-PAR6 Monoclonal Antibody - Protocols

Provided below are standard protocols that you may find useful for product applications.

- [Western Blot](#)
- [Blocking Peptides](#)
- [Dot Blot](#)
- [Immunohistochemistry](#)
- [Immunofluorescence](#)
- [Immunoprecipitation](#)
- [Flow Cytometry](#)
- [Cell Culture](#)

## Anti-PAR6 Monoclonal Antibody - Images



Western blot analysis of PAR6 expression in Jurkat cell lysate.