

Anti-Aldolase ALDOA Monoclonal Antibody Catalog # ABO14599

Specification

Anti-Aldolase ALDOA Monoclonal Antibody - Product Information

Application	WB, IHC, IF, ICC
Primary Accession	P04075
Host	Rabbit
Isotype	Rabbit IgG
Reactivity	Rat, Human, Mouse
Clonality	Monoclonal
Format	Liquid

Description

Anti-Aldolase ALDOA Monoclonal Antibody . Tested in WB, IHC, ICC/IF applications. This antibody reacts with Human, Mouse, Rat.

Anti-Aldolase ALDOA Monoclonal Antibody - Additional Information

Gene ID 226

Other Names

Fructose-bisphosphate aldolase A, 4.1.2.13, Lung cancer antigen NY-LU-1, Muscle-type aldolase, ALDOA ([HGNC:414](http://www.genenames.org/cgi-bin/gene_symbol_report?hgnc_id=414)), ALDA

Application Details

WB 1:500-1:2000
IHC 1:50-1:200
ICC/IF 1:50-1:200

Contents

Rabbit IgG in phosphate buffered saline, pH 7.4, 150mM NaCl, 0.02% sodium azide and 50% glycerol, 0.4-0.5mg/ml BSA.

Immunogen

A synthesized peptide derived from human Aldolase

Purification

Affinity-chromatography

Storage

Store at -20°C for one year. For short term storage and frequent use, store at 4°C for up to one month. Avoid repeated freeze-thaw cycles.

Anti-Aldolase ALDOA Monoclonal Antibody - Protein Information

Name ALDOA ([HGNC:414](#))

Synonyms ALDA

Function

Catalyzes the reversible conversion of beta-D-fructose 1,6- bisphosphate (FBP) into two triose phosphate and plays a key role in glycolysis and gluconeogenesis (PubMed:14766013). In addition, may also function as scaffolding protein (By similarity).

Cellular Location

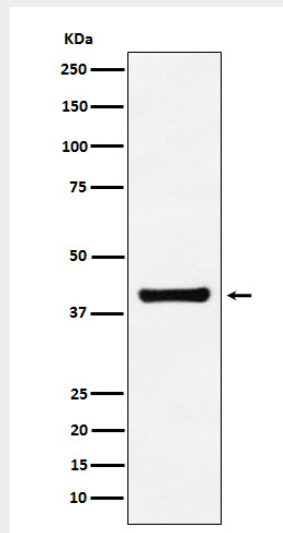
Cytoplasm, myofibril, sarcomere, I band {ECO:0000250|UniProtKB:P00883}. Cytoplasm, myofibril, sarcomere, M line {ECO:0000250|UniProtKB:P00883}. Note=In skeletal muscle, accumulates around the M line and within the I band, colocalizing with FBP2 on both sides of the Z line in the absence of Ca(2+) {ECO:0000250|UniProtKB:P00883}

Anti-Aldolase ALDOA Monoclonal Antibody - Protocols

Provided below are standard protocols that you may find useful for product applications.

- [Western Blot](#)
- [Blocking Peptides](#)
- [Dot Blot](#)
- [Immunohistochemistry](#)
- [Immunofluorescence](#)
- [Immunoprecipitation](#)
- [Flow Cytometry](#)
- [Cell Culture](#)

Anti-Aldolase ALDOA Monoclonal Antibody - Images



Western blot analysis of Aldolase expression in A549 cell lysate.